

NOTES:

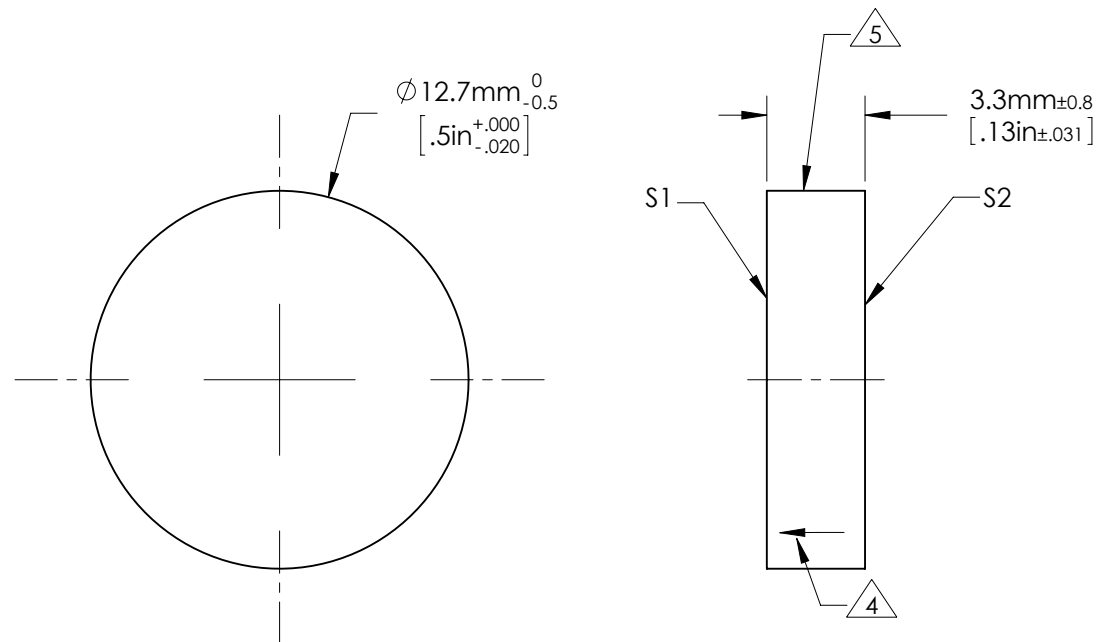
- 1. ALLOWABLE OPTICAL MATERIAL:  
SCHOTT: Fused Silica 458/678
- 2. SURFACE S2 TO BE PARALLEL WITH SURFACE S1 TO < 3 ARCMIN
- 3. COATING (APPLY ACROSS COATING APERTURE)

S1: PROTECTED ALUMINUM  
Ravg ≥ 85% 400-700nm @ 0° AOI


S2: NONE

4. ARROW ON EDGE POINTING TOWARDS SURFACE S1.

5. FINE GROUND SURFACE



**FOR INFORMATION ONLY:**  
**DO NOT MANUFACTURE PARTS TO THIS DRAWING**

	S1	S2	EFL (AT 587.6nm)	NA	 Edmund Optics®		
SHAPE	PLANO	PLANO					
SURFACE ACCURACY AT 632.8nm	1/20 WAVE	NA	BFL (AT 587.6nm)	NA	TITLE	1/20λ Flat Fused Silica 0.5" Dia. Protected Aluminum	
SURFACE QUALITY	60 - 40	COMMERCIAL POLISH					
CLEAR APERTURE	Ø 11.4	Ø 11.4	ALL DIMS IN	mm	DWG NO	43400-522	
BEVEL MAX FACE	0.5 x 45°	0.5 x 45°					