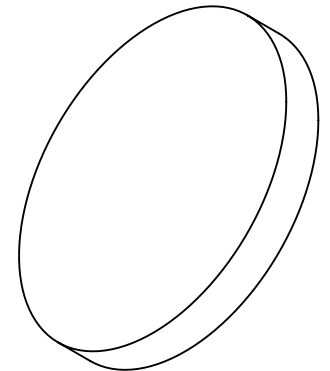
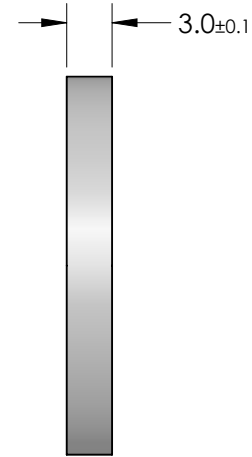
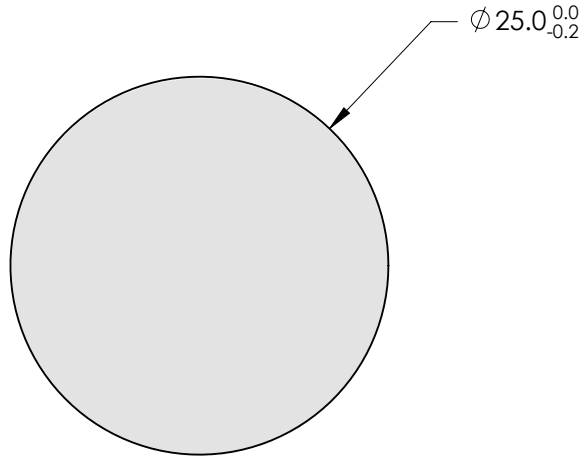



**FOR INFORMATION ONLY:**  
**DO NOT MANUFACTURE**  
**PARTS TO THIS DRAWING**



SPECIFICATION	VALUE
CUT-OFF WAVELENGTH	600nm±2%
TRANSMISSION BAND	400 - 580nm
REJECTION BAND	625 - 795nm
PASSBAND TRANSMISSION	>85%
REJECTION BAND BLOCKING	≥2.0
CLEAR APERTURE	80%
SURFACE QUALITY	40-20
TRANSMITTED WAVEFRONT	λ/4 P-V
SLOPE FACTOR	±3%
ANGLE OF INCIDENCE (DEG)	0°
COATING TYPE	Traditional Coated
SUBSTRATE	UV Grade Fused Silica

SPECIFICATIONS SUBJECT TO CHANGE WITHOUT NOTICE  
 DIMENSIONS ARE FOR REFERENCE ONLY

EFL (AT 587.6nm)	NA	 <b>Edmund Optics®</b>		
BFL (AT 587.6nm)	NA			TITLE
ALL DIMS IN	mm	DWG NO	47289	SHEET 1 OF 1