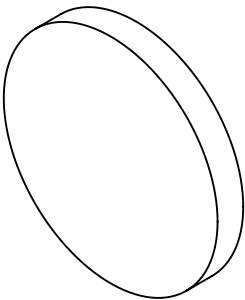
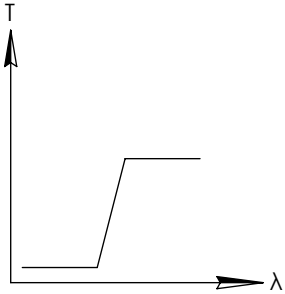
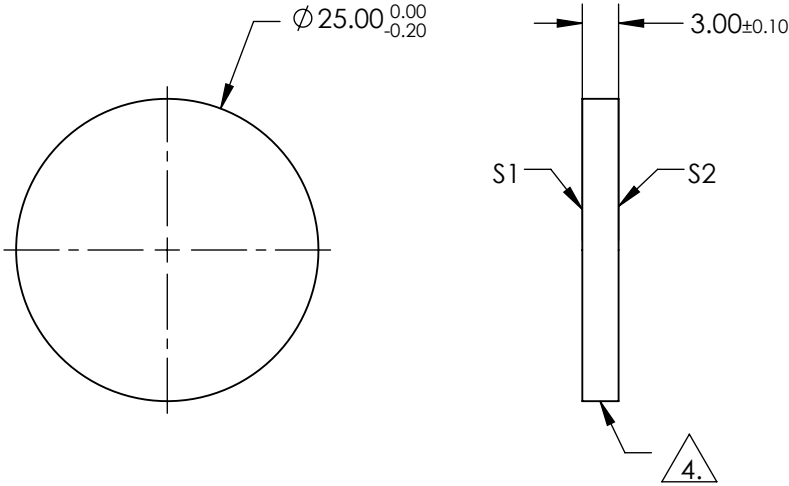


**FOR INFORMATION ONLY:  
DO NOT MANUFACTURE  
PARTS TO THIS DRAWING**

- NOTES:
1. SUBSTRATE  
UV GRADE FUSED SILICA
  2. SURFACE S2 TO BE PARALLEL WITH SURFACE S1 TO WITHIN 5 ARCSEC
  3. COATING (APPLY ACROSS COATING APERTURE)  
  
PERFORMANCE SPECIFICATIONS @ 0° AOI  
T(AVG): >85% FROM 1650 - 2000nm  
T(AVG): < 1% FROM 1300 - 1560nm  
T(ABS): = 50% @ 1600nm  
  
S1: MULTILAYER DIELECTRIC COATING  
S2: SINGLE LAYER MgF2



4. FINE GRIND SURFACE
5. TRANSMITTED WAVEFRONT DISTORTION RMS@ 632.8nm ≤ ¼ WAVE
  6. ROHS COMPLIANT

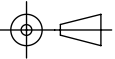


LONGPASS FILTER

SPECIFICATIONS SUBJECT TO CHANGE WITHOUT NOTICE  
DIMENSIONS ARE FOR REFERENCE ONLY

	S1	S2
SHAPE	PLANO	PLANO
SURFACE QUALITY	40-20	40-20
CLEAR APERTURE	80%	80%
COATING APERTURE	Ø20.00	Ø20.00
BEVEL	PROTECTIVE AS NEEDED	PROTECTIVE AS NEEDED

THIRD ANGLE  
PROJECTION



ALL DIMS IN

mm



**Edmund Optics®**

TITLE

OD2, Ø25mm, 1600nm LONGPASS FILTER

DWG NO

84680

SHEET  
1 OF 1