

NOTES:

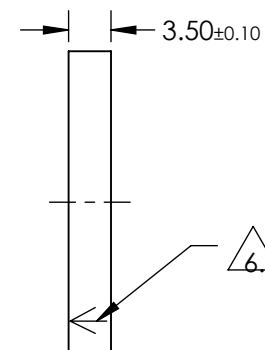
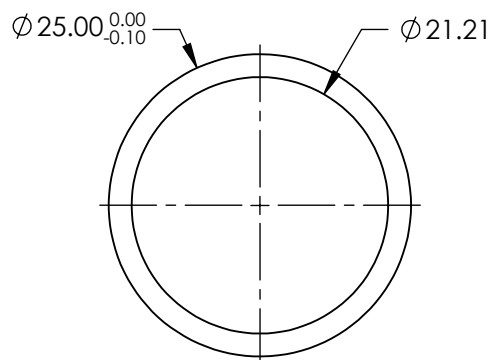
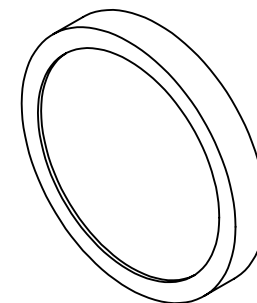
1. CONSTRUCTION: MOUNTED IN BLACK ANODIZED RING
2. COATING (APPLY ACROSS COATING APERTURE)

DURABILITY: MIL-C-48497A  
 PERFORMANCE SPECIFICATIONS:  
 CWL: 632.8nm  
 FWHM: 25nm

R (ABS) > 99.5% @ 632.8±6.3nm  
 T (ABS) < 0.001% @ 632.8±6.3nm  
 T (AVG) ≥ 80% FROM 350 - 400nm  
 T (AVG) ≥ 90% FROM 400 - 1200nm

3. SURFACE QUALITY: 60-40
4. TRANSMITTED WAVEFRONT DISTORTION RMS @632.8nm: <1λ
5. ROHS COMPLIANT

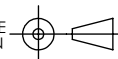
△ 6. ARROW ON PART POINTS TOWARDS COATED SURFACE



**FOR INFORMATION ONLY:  
 DO NOT MANUFACTURE  
 PARTS TO THIS DRAWING**

SPECIFICATIONS SUBJECT TO CHANGE WITHOUT NOTICE  
 DIMENSIONS ARE FOR REFERENCE ONLY

**Edmund Optics®**

THIRD ANGLE PROJECTION 	TITLE	OD6, Ø25mm, 632.8nm, BLOCKING NOTCH FILTER		
ALL DIMS IN	mm	DWG NO	86126	SHEET 1 OF 1