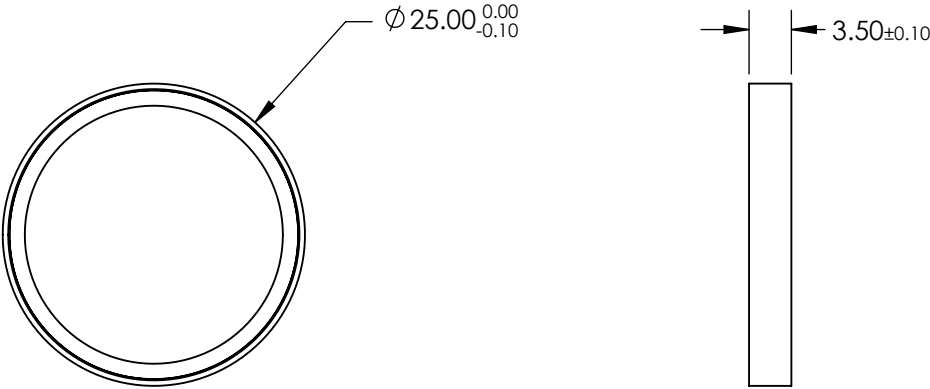
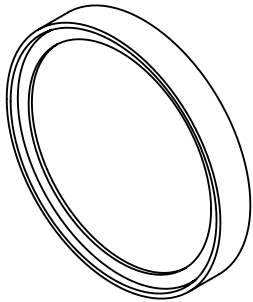


NOTES:

1. SUBSTRATE
2. SURFACE S2 TO BE PARALLEL WITH SURFACE S1 TO WITHIN 10 ARCSEC
3. COATING (APPLY ACROSS CLEAR APERTURE)
PHYSICAL DURABILITY: MIL-C-48497A
ENVIRONMENTAL DURABILITY: MIL-STD-810F
Tavg ≥93% @ 521.2 - 1160.5nm
4. FINE GROUND SURFACE
5. POWER, IRREGULARITY, AND SURFACE QUALITY SPECIFICATIONS APPLY
ACROSS CLEAR APERTURE
6. TRANSMITTED WAVEFRONT DISTORTION RMS @ <λ/4 @ 633nm
7. RoHS COMPLIANT

**FOR INFORMATION ONLY:
DO NOT MANUFACTURE
PARTS TO THIS DRAWING**



SPECIFICATIONS SUBJECT TO CHANGE WITHOUT NOTICE
DIMENSIONS ARE FOR REFERENCE ONLY

REV. A	S1	S2	<div><div><div><div><div></div><div></div></div><div></div></div><div>THIRD ANGLE PROJECTION</div></div><div><div>ALL DIMS IN</div><div>mm</div></div></div> <div><div><div><div>EO[®]</div><div>Edmund Optics[®]</div></div><div><div>TITLE</div><div>Ø25mm, 519.6nm, RAMAN EDGE FILTER</div></div><div><div>DWG NO</div><div>86241</div></div><div><div>SHEET</div><div>1 OF 1</div></div></div></div>
SHAPE	PLANO	PLANO	
SURFACE QUALITY	60-40	60-40	
CLEAR APERTURE	>80%	>80%	
REJECTION WAVELENGTH	416 - 514.5	416 - 514.5	
BEVEL	PROTECTIVE AS NEEDED	PROTECTIVE AS NEEDED	