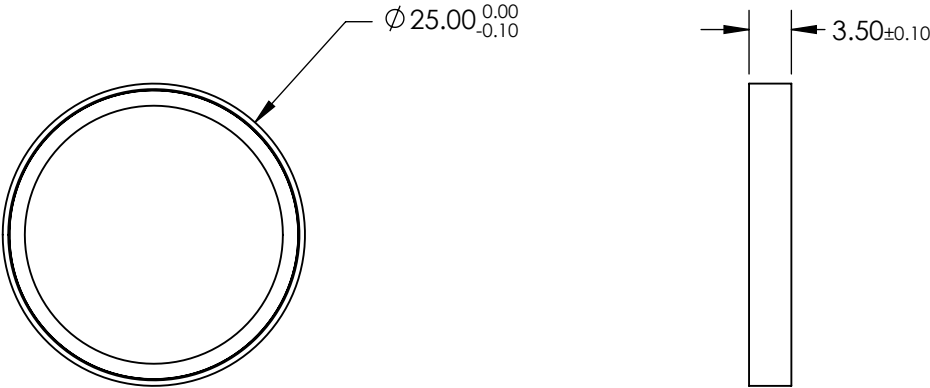
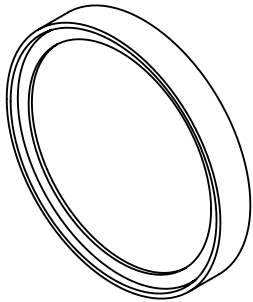



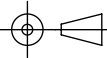
NOTES:

1. SUBSTRATE
2. SURFACE S2 TO BE PARALLEL WITH SURFACE S1 TO WITHIN 10 ARCSEC
3. COATING (APPLY ACROSS CLEAR APERTURE)
PHYSICAL DURABILITY: MIL-C-48497A
ENVIRONMENTAL DURABILITY: MIL-STD-810F
Tavg ≥93% @ 641.0 - 1427.4nm
4. FINE GROUND SURFACE
5. POWER, IRREGULARITY, AND SURFACE QUALITY SPECIFICATIONS APPLY
ACROSS CLEAR APERTURE
6. TRANSMITTED WAVEFRONT DISTORTION RMS @ <λ/4 @ 633nm
7. RoHS COMPLIANT

**FOR INFORMATION ONLY:
DO NOT MANUFACTURE
PARTS TO THIS DRAWING**



SPECIFICATIONS SUBJECT TO CHANGE WITHOUT NOTICE
DIMENSIONS ARE FOR REFERENCE ONLY

REV. A	S1	S2	 Edmund Optics®			
SHAPE	PLANO	PLANO				
SURFACE QUALITY	60-40	60-40				
CLEAR APERTURE	>80%	>80%				
REJECTION WAVELENGTH	513 - 632.8	513 - 632.8	TITLE Ø25mm, 639.1nm, RAMAN EDGE FILTER			
BEVEL	PROTECTIVE AS NEEDED	PROTECTIVE AS NEEDED				
			ALL DIMS IN	mm	DWG NO 86243	SHEET 1 OF 1