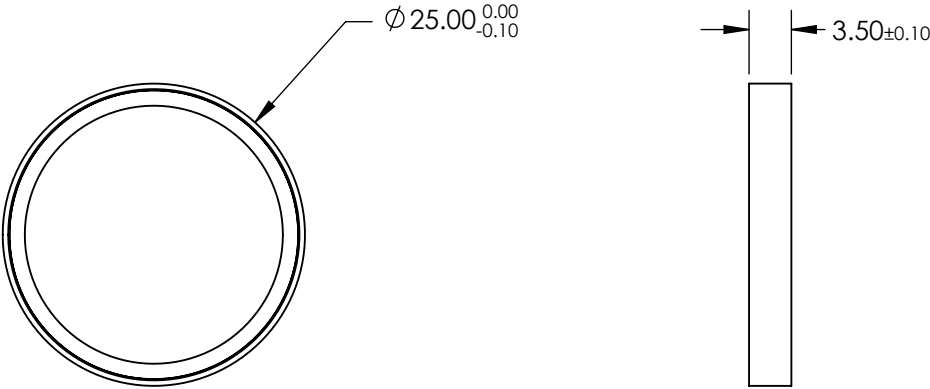
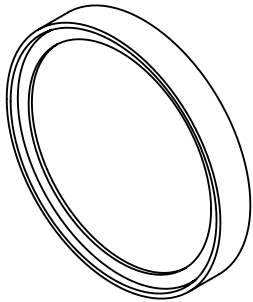



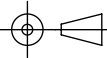
NOTES:

1. SUBSTRATE
2. SURFACE S2 TO BE PARALLEL WITH SURFACE S1 TO WITHIN 10 ARCSEC
3. COATING (APPLY ACROSS CLEAR APERTURE)  
PHYSICAL DURABILITY: MIL-C-48497A  
ENVIRONMENTAL DURABILITY: MIL-STD-810F  
Tavg ≥93% @ 992.7 - 2000nm
4. FINE GROUND SURFACE
5. POWER, IRREGULARITY, AND SURFACE QUALITY SPECIFICATIONS APPLY  
ACROSS CLEAR APERTURE
6. TRANSMITTED WAVEFRONT DISTORTION RMS @  $<\lambda/4$  @ 633nm
7. RoHS COMPLIANT

**FOR INFORMATION ONLY:  
DO NOT MANUFACTURE  
PARTS TO THIS DRAWING**



SPECIFICATIONS SUBJECT TO CHANGE WITHOUT NOTICE  
DIMENSIONS ARE FOR REFERENCE ONLY

REV. A	S1	S2	 <b>Edmund Optics®</b>			
SHAPE	PLANO	PLANO				
SURFACE QUALITY	60-40	60-40				
CLEAR APERTURE	>80%	>80%				
REJECTION WAVELENGTH	770 - 980	770 - 980	TITLE    Ø25mm, 989.8nm, RAMAN EDGE FILTER			
BEVEL	PROTECTIVE AS NEEDED	PROTECTIVE AS NEEDED				
			ALL DIMS IN	mm	DWG NO    86248	SHEET 1 OF 1