

NOTES:

1. SUBSTRATE MATERIAL:  
ALUMINUM
2. FINISH (EXCEPT SURFACE S1):  
BLACK ANODIZED
3. COATING (APPLY ACROSS CLEAR APERTURE)  
S1: SILVER

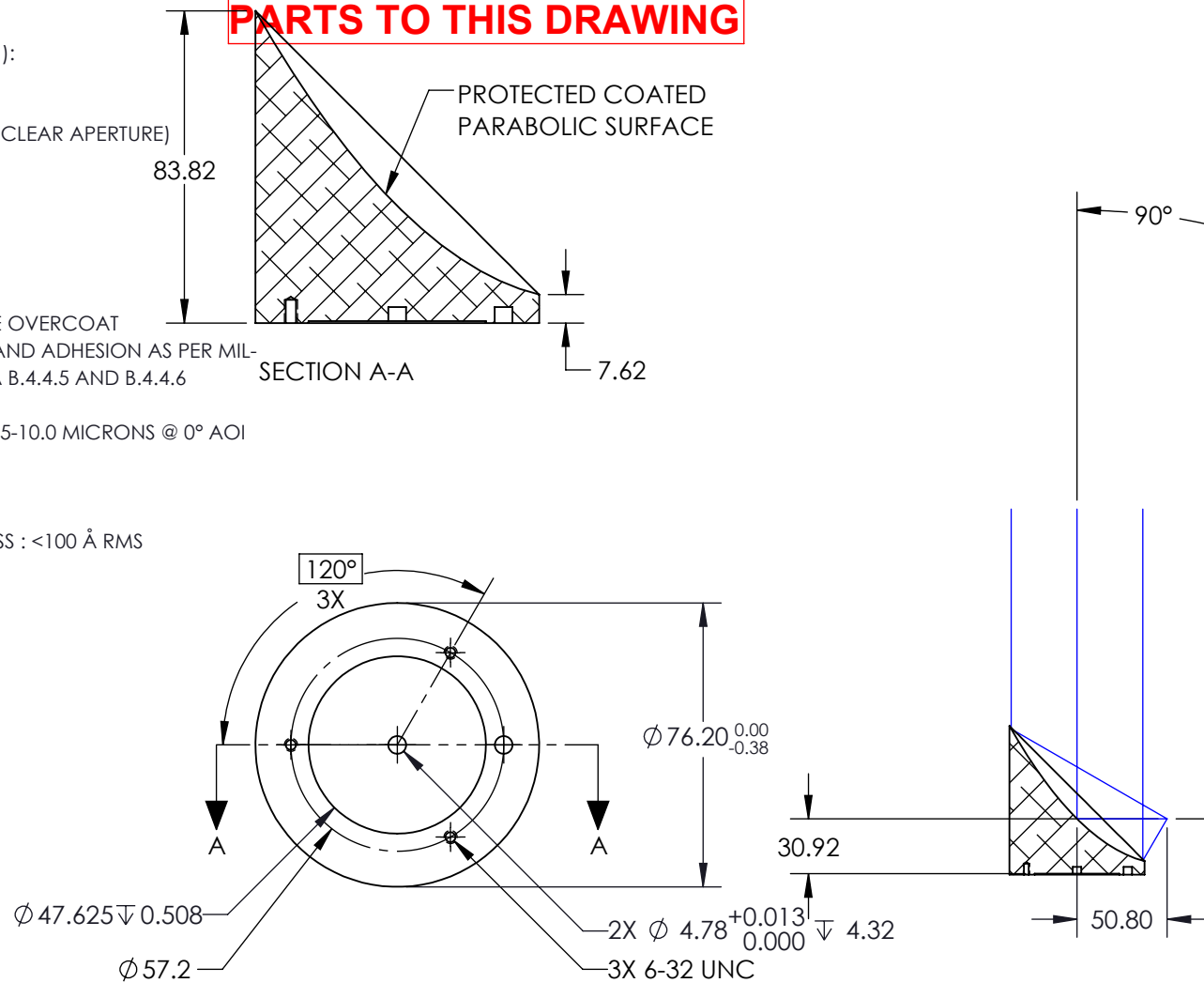
SILVER WITH PROTECTIVE OVERCOAT  
DURABILITY: ABRASION AND ADHESION AS PER MIL-PRF-13830B APP B, PARA B.4.4.5 AND B.4.4.6

R(AVG) > 98% FROM 0.45-10.0 MICRONS @ 0° AOI  
0  
0

SURFACE ROUGHNESS : <100 Å RMS

4. EFL TOLERANCE: ±1%
5. ROHS COMPLIANT

**FOR INFORMATION ONLY:  
DO NOT MANUFACTURE  
PARTS TO THIS DRAWING**



SPECIFICATIONS SUBJECT TO CHANGE WITHOUT NOTICE  
DIMENSIONS ARE FOR REFERENCE ONLY

REV. A	S1
SHAPE	PARABOLIC
REFLECTIVE WAVEFRONT DISTORTION AT 632.8nm (RMS)	3/2λ
SURFACE FIGURE AT 632.8nm (RMS)	3/4λ
CLEAR APERTURE	90%
BEVEL	PROTECTIVE AS NEEDED

THIRD ANGLE PROJECTION	
ALL DIMS IN	mm

	<b>Edmund Optics®</b>
TITLE	Ø76.2 X 50.8mm EFL 90° OFF-AXIS PARABOLIC SILVER MIRROR 100A
DWG NO	36600
SHEET	1 OF 1