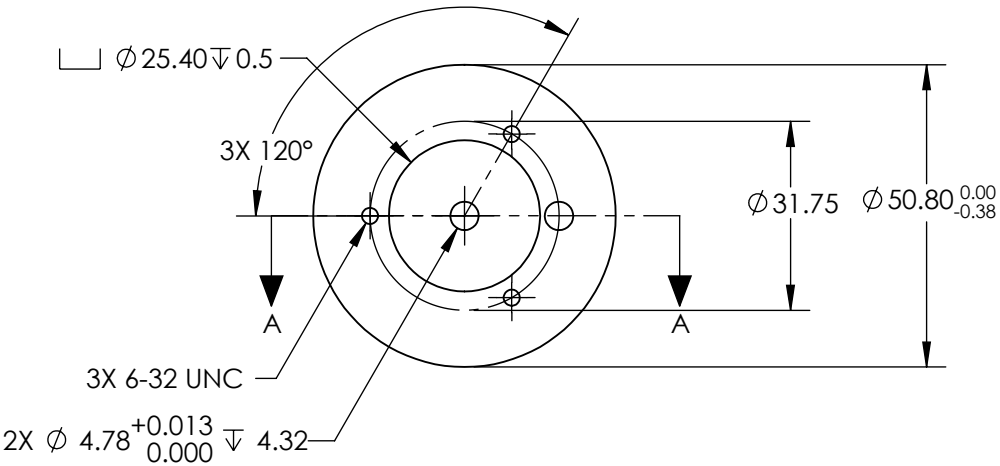
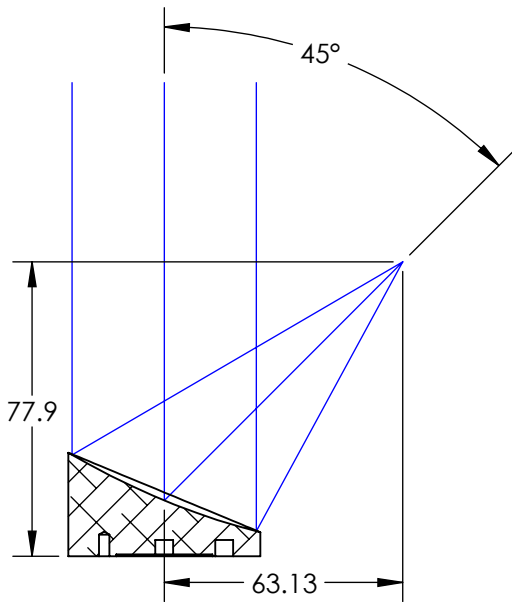
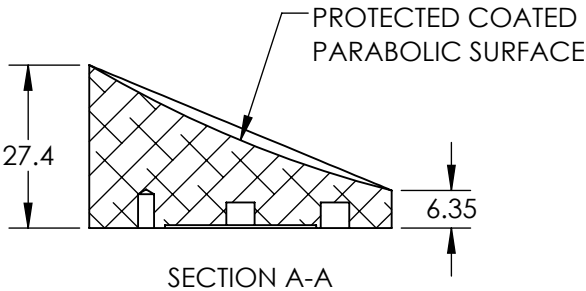
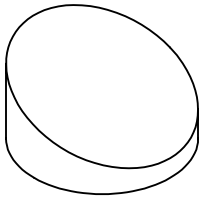


NOTES:

1. SUBSTRATE MATERIAL:
ALUMINUM
2. FINISH (EXCEPT SURFACE S1):
BLACK ANODIZED
3. COATING (APPLY ACROSS CLEAR APERTURE)
S1: BARE GOLD
R(AVG) >94% @ 700 - 800nm
R(AVG) >97% @ 800 - 2000nm
R(AVG) >98% @ 2000 - 12000nm

SURFACE ROUGHNESS: <175 Å RMS
4. FOCAL LENGTH TOLERANCE: ±1%
5. ROHS COMPLIANT

**FOR INFORMATION ONLY:
DO NOT MANUFACTURE
PARTS TO THIS DRAWING**



SPECIFICATIONS SUBJECT TO CHANGE WITHOUT NOTICE
DIMENSIONS ARE FOR REFERENCE ONLY

	S1
SHAPE	PARABOLIC
REFLECTIVE WAVEFRONT DISTORTION AT 632.8nm (RMS)	1λ
SURFACE FIGURE AT 632.8nm (RMS)	λ/2
CLEAR APERTURE	90%
BEVEL	PROTECTIVE AS NEEDED

Edmund Optics®



ALL DIMS IN

mm

TITLE

Ø50.8 X 89.28mm EFL 45° OFF-AXIS
PARABOLIC BARE GOLD MIRROR 175A

DWG NO

86298

SHEET
1 OF 1