

NOTES:

1. SUBSTRATE MATERIAL:
ALUMINUM
2. FINISH (EXCEPT SURFACE S1):
BLACK ANODIZED
3. COATING (APPLY ACROSS CLEAR APERTURE)
S1: SILVER

**FOR INFORMATION ONLY:
DO NOT MANUFACTURE
PARTS TO THIS DRAWING**

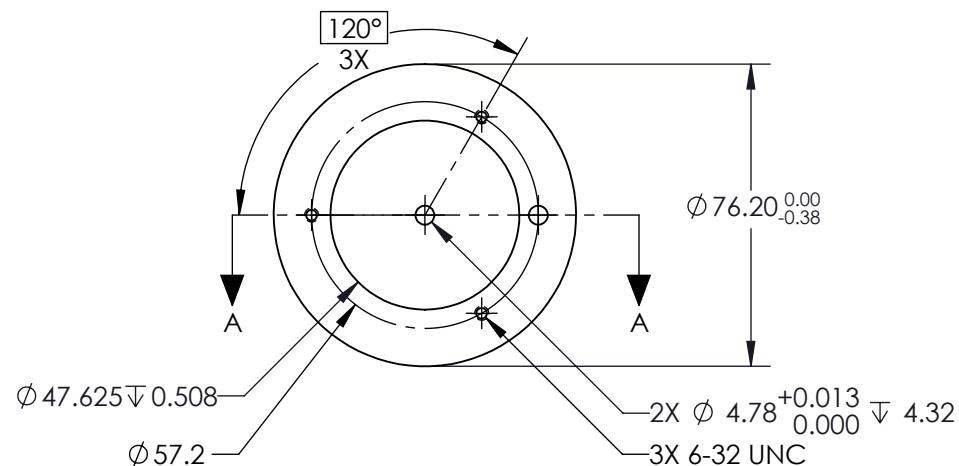
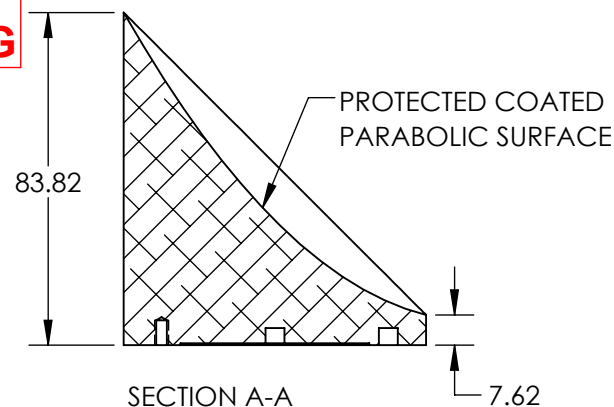
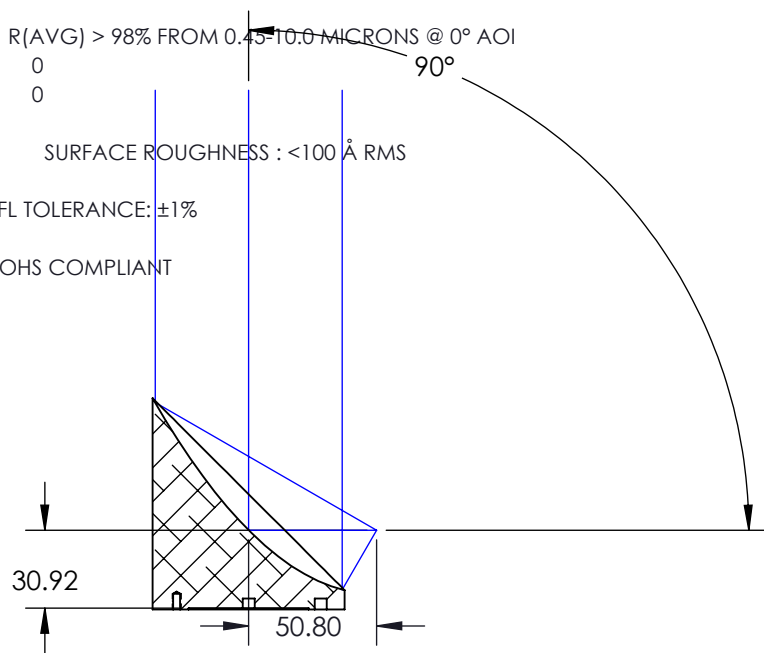
SILVER WITH PROTECTIVE OVERCOAT
DURABILITY: ABRASION AND ADHESION AS PER MIL-
PRF-13830B APP B, PARA B.4.4.5 AND B.4.4.6

R(AVG) > 98% FROM 0.45-10.0 MICRONS @ 0° AOI
0
0

SURFACE ROUGHNESS: <100 Å RMS

4. EFL TOLERANCE: ±1%

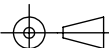
5. ROHS COMPLIANT



SPECIFICATIONS SUBJECT TO CHANGE WITHOUT NOTICE
DIMENSIONS ARE FOR REFERENCE ONLY

REV. A	S1
SHAPE	PARABOLIC
REFLECTIVE WAVEFRONT DISTORTION AT 632.8nm (RMS)	3/2λ
SURFACE FIGURE AT 632.8nm (RMS)	3/4λ
CLEAR APERTURE	90%
BEVEL	PROTECTIVE AS NEEDED

THIRD ANGLE
PROJECTION



ALL DIMS IN

mm



Edmund Optics®

TITLE

Ø76.2 X 50.8mm EFL 90° OFF-AXIS PARABOLIC
SILVER MIRROR 100A

DWG NO

36600

SHEET
1 OF 1