

NOTES:

- SUBSTRATE: GRADE A FINE ANNEALED
ZEONEX E48R
- COATING:
S1: R(avg) ≤0.75% @ 425 - 675nm
S2: R(avg) ≤0.75% @ 425 - 675nm

3. EDGES: FINE GROUND

4. ASPHERIC SURFACE DESCRIBED BY:

$$Z_{ASPH}(Y) = \frac{(\frac{1}{RADIUS}) * Y^2}{1 + \sqrt{1 - (1+k) * (\frac{1}{RADIUS})^2 * Y^2}} + D * Y^2 + E * Y^4 + F * Y^6 + G * Y^8 + H * Y^{10} + J * Y^{12} + L * Y^{14}$$

6. SURFACE PROFILE CHANGE DUE TO DIFFRACTIVE PATTERN DEFINED BY:

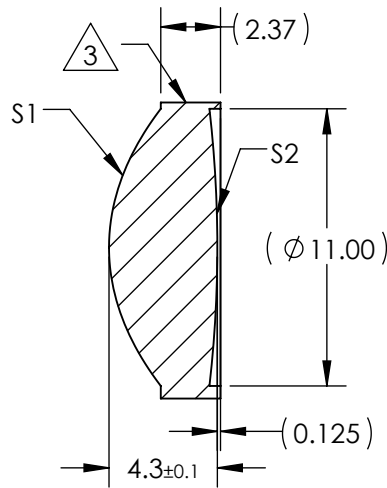
WHERE:

$$\frac{STEP}{HEIGHT} = \frac{\lambda}{nd - 1}$$

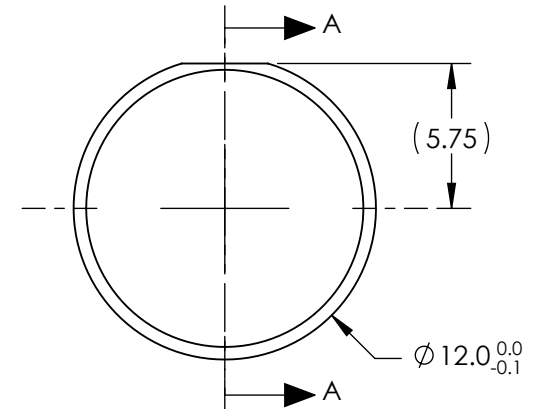
$$Z_{DIFF}(Y) = \frac{1}{(nd - 1)} * (Z_2 * Y^2 + Z_4 * Y^4) + (STEP_HEIGHT) * \left[INT \left(\frac{1}{\lambda} * (Z_2 * Y^2 + Z_4 * Y^4) \right) \right]$$

**FOR INFORMATION ONLY:
DO NOT MANUFACTURE
PARTS TO THIS DRAWING**


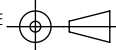
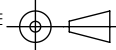
COEFFICIENT TABLE	
COEFFICIENT	S1
λ	0.587 MICRONS
Z2	-2.1913105E-3
Z4	-6.0986035E-6
k	-0.7
D	0
E	-9.0564752E-6
F	-5.3473757E-7
G	-7.4721884E-9
H	0
J	0
L	0



SECTION A-A



SPECIFICATIONS SUBJECT TO CHANGE WITHOUT NOTICE DIMENSIONS ARE FOR REFERENCE ONLY

REV. A	S1	S2	EFL (@ 587.6nm)	12	 Edmund Optics®	
SHAPE	CONVEX	CONVEX	BFL (@ 587.6nm)	9.5		
RADIUS	7.57	48.3			TITLE	12mm DIA. X 12mm FL, VIS COATED, HYBRID ASPHERE
SURFACE QUALITY	60 - 40	60 - 40				
CLEAR APERTURE	Ø 10.0	Ø 10.0			DWG NO	65997
BEVEL MAX	PROTECTIVE AS NEEDED	PROTECTIVE AS NEEDED				
			ALL DIMS IN	mm		SHEET 1 OF 1