

NOTES:

1. SUBSTRATE MATERIAL:  
ALUMINUM

2. FINISH (EXCEPT SURFACE S1):  
BLACK ANODIZED

3. COATING (APPLY ACROSS CLEAR APERTURE)

S1: PROTECTED GOLD

R(AVG) >94% @ 700 - 800nm

R(AVG) >97% @ 800 - 2000nm

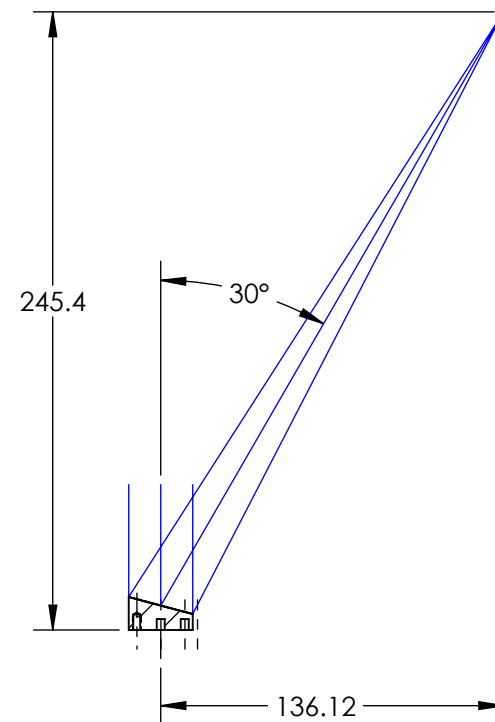
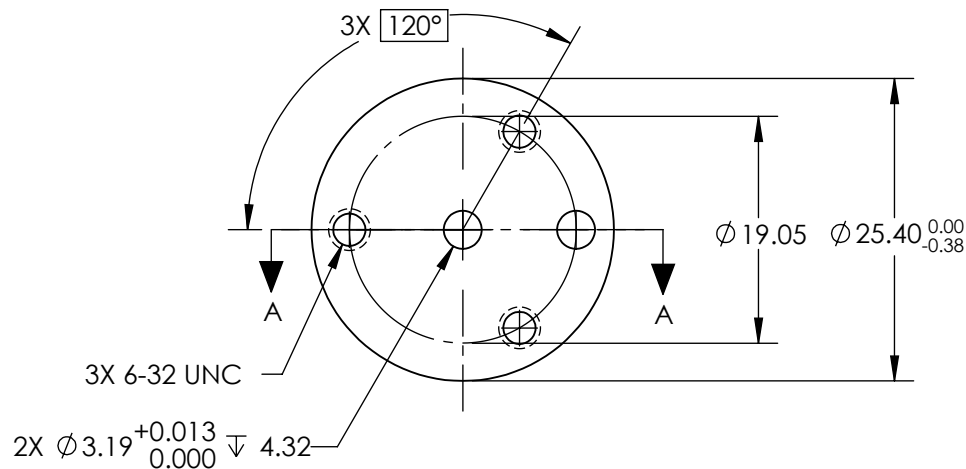
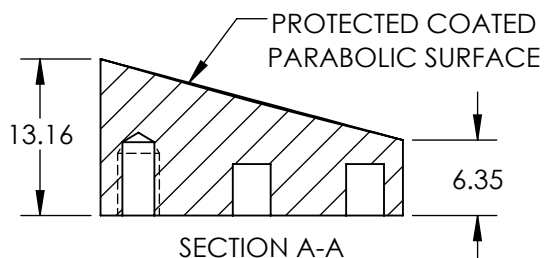
R(AVG) >98% @ 2000 - 12000nm

SURFACE ROUGHNESS : <175 Å RMS

4. EFL TOLERANCE: ±1%

5. ROHS COMPLIANT

**FOR INFORMATION ONLY:  
DO NOT MANUFACTURE  
PARTS TO THIS DRAWING**



SPECIFICATIONS SUBJECT TO CHANGE WITHOUT NOTICE  
DIMENSIONS ARE FOR REFERENCE ONLY

REV. A	S1
SHAPE	PARABOLIC
REFLECTIVE WAVEFRONT DISTORTION AT 632.8nm (RMS)	$\lambda/2$
SURFACE FIGURE AT 632.8nm (RMS)	$\lambda/4$
CLEAR APERTURE	90%
BEVEL	PROTECTIVE AS NEEDED



ALL DIMS IN

mm



Edmund Optics®

TITLE

Ø25.4 X 272.24mm EFL 30° OFF-AXIS  
PARABOLIC GOLD MIRROR 175A

DWG NO

84574

SHEET  
1 OF 1