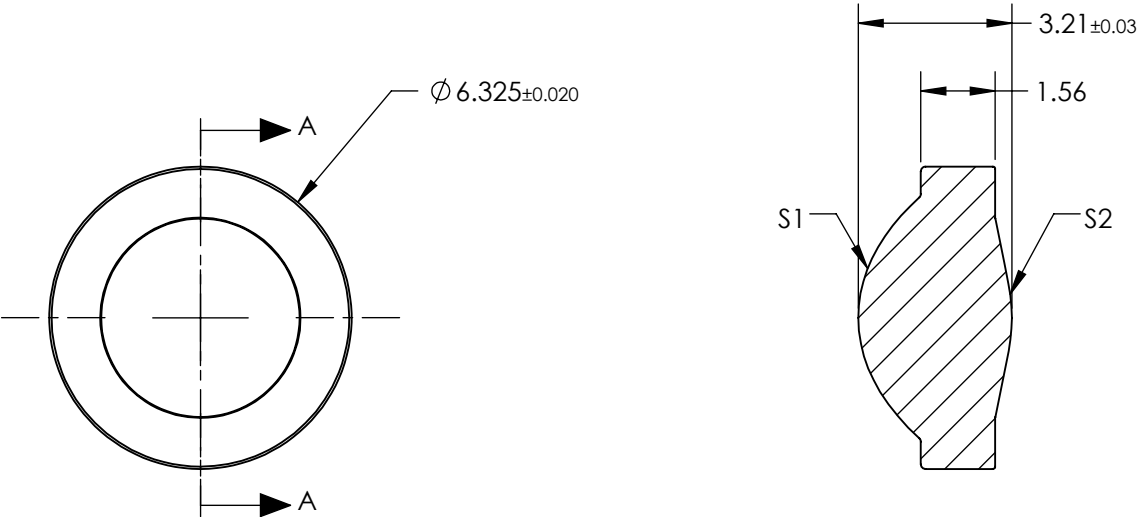


NOTES:


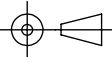
- 1. SUBSTRATE:  
D-ZK3
- 2. NUMERICAL APERTURE: 0.68
- 3. COATING  
S1 & S2: R(ABS) < 1.0% @ 1050 - 1600nm
- 4. FOCAL LENGTH TOLERANCE: ±1%
- 5. TRANSMITTED WAVEFRONT ERROR (λ, RMS): < 0.200



SECTION A-A

**FOR INFORMATION ONLY:  
DO NOT MANUFACTURE  
PARTS TO THIS DRAWING**

SPECIFICATIONS SUBJECT TO CHANGE WITHOUT NOTICE DIMENSIONS ARE FOR REFERENCE ONLY

	S1	S2	EFL	3.10	 <b>Edmund Optics®</b>		
			BFL	1.80			
SHAPE	CONVEX	CONVEX	THIRD ANGLE PROJECTION 	TITLE	0.68 NA 3.10mm FL 1050-1600nm AR COATED, MOLDED ASPHERIC LENS		
SURFACE QUALITY	40-20	40-20					
CLEAR APERTURE	Ø5.00	Ø5.00					
BEVEL MAX	PROTECTIVE AS NEEDED	PROTECTIVE AS NEEDED	ALL DIMS IN	mm	DWG NO	87167	SHEET 1 OF 1