

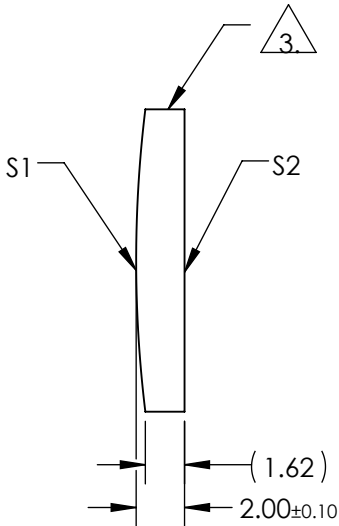
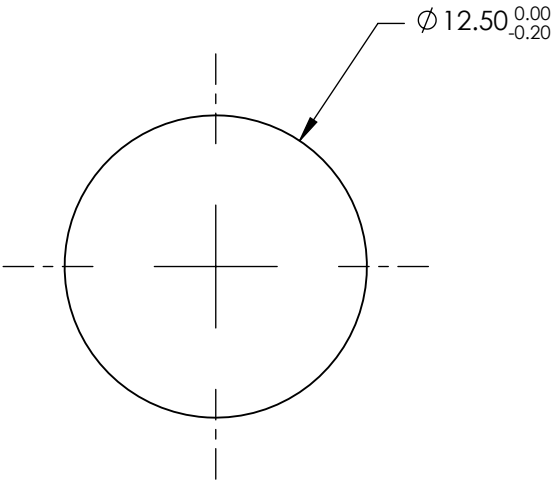
NOTES:

1. SUBSTRATE MATERIAL:
N-BK7
2. COATING (APPLY ACROSS CLEAR APERTURE)

S1 & S2: VIS 0° (425-675nm)
R(AVG) ≤0.4% @ 425 - 675nm


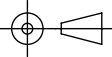
3. FINE GROUND SURFACE

4. RoHS COMPLIANT



**FOR INFORMATION ONLY:
DO NOT MANUFACTURE
PARTS TO THIS DRAWING**

SPECIFICATIONS SUBJECT TO CHANGE WITHOUT NOTICE
DIMENSIONS ARE FOR REFERENCE ONLY

	S1	S2	EFL	100.00	 Edmund Optics®	
SHAPE	CONVEX	PLANO	BFL	98.68		
RADIUS	51.68	INFINITY			TITLE	12.5mm DIA X 100mm FL VIS 0° COATED, CYLINDER LENS
SURFACE QUALITY	60-40	60-40				
CLEAR APERTURE	Ø11.50	Ø11.50	ALL DIMS IN	mm	DWG NO	69720
BEVEL	PROTECTIVE AS NEEDED	PROTECTIVE AS NEEDED				SHEET 1 OF 1