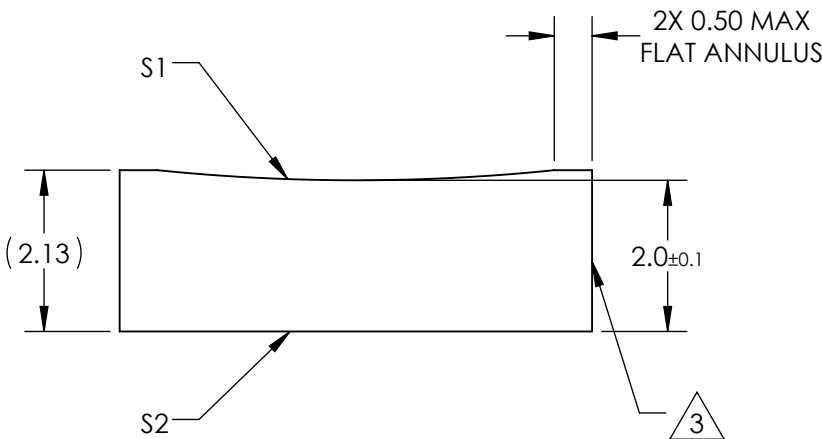
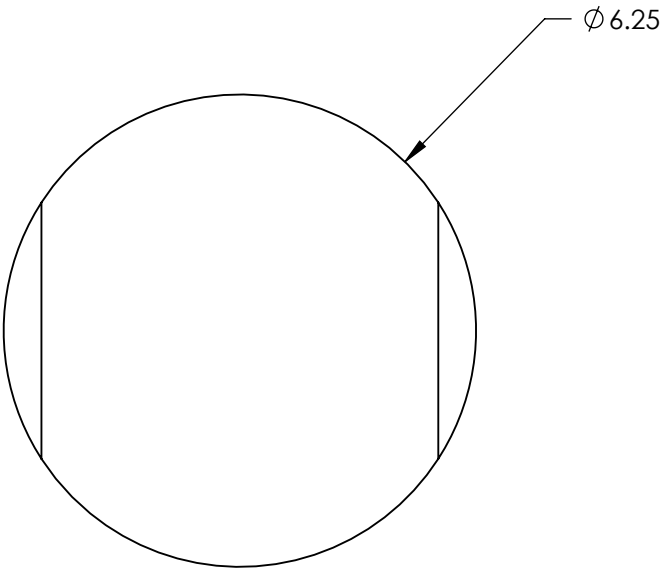


NOTES:

1. SUBSTRATE MATERIAL:
N-BK7
2. COATING (APPLY ACROSS CLEAR APERTURE)
- S1 & S2: NONE


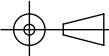
3. FINE GROUND SURFACE

4. POWER, IRREGULARITY, AND SURFACE QUALITY
SPECIFICAIONS APPLY ACROSS CLEAR APERTURE
5. RoHS COMPLIANT



**FOR INFORMATION ONLY:
DO NOT MANUFACTURE
PARTS TO THIS DRAWING**

SPECIFICATIONS SUBJECT TO CHANGE WITHOUT NOTICE
DIMENSIONS ARE FOR REFERENCE ONLY

REV. A	S1	S2	<div>EFL-50</div> <div>BFL-51.32</div> <div> Edmund Optics®</div>			
SHAPE	CONVEX	PLANO				
RADIUS	-25.84	∞	<div>THIRD ANGLE PROJECTION</div> <div>TITLE</div> <div>6.25mm DIA X -50mm FL UNCOATED, CYLINDER LENS</div>			
SURFACE QUALITY	60-40	60-40				
CLEAR APERTURE	Ø5.25	Ø5.25	<div>ALL DIMS INmm</div> <div>DWG NO</div> <div>47746</div> <div>SHEET 1 OF 1</div>			
COATING APERTURE	Ø5.25	Ø5.25				
BEVEL	PROTECTED AS NEEDED	PROTECTED AS NEEDED				