

NOTES:

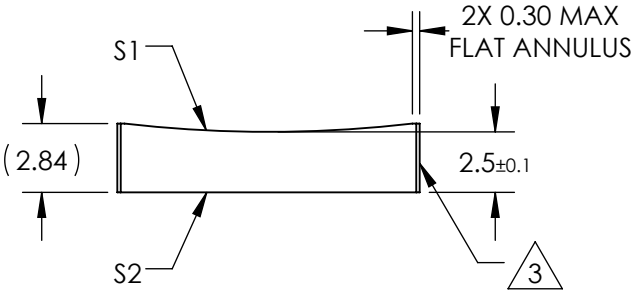
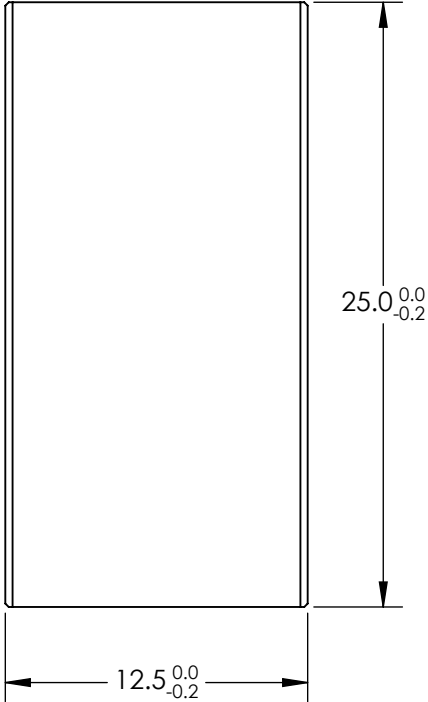
1. SUBSTRATE MATERIAL:
N-BK7
2. COATING (APPLY ACROSS CLEAR APERTURE)

S1 & S2: NONE


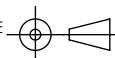
3. FINE GROUND SURFACE

4. POWER, IRREGULARITY, AND SURFACE QUALITY
SPECIFICAIONS APPLY ACROSS CLEAR APERTURE
5. RoHS COMPLIANT

**FOR INFORMATION ONLY:
DO NOT MANUFACTURE
PARTS TO THIS DRAWING**



SPECIFICATIONS SUBJECT TO CHANGE WITHOUT NOTICE
DIMENSIONS ARE FOR REFERENCE ONLY

REV. A	S1	S2			 Edmund Optics®				
SHAPE	CONVEX	PLANO	EFL	-100					
RADIUS	-51.68	∞	BFL	-101.65					
SURFACE QUALITY	60-40	60-40			TITLE	12.5mm H X 25mm L X -100mm FL UNCOATED, CYLINDER LENS			
CLEAR APERTURE	11.50 X 24.00	11.50 X 24.00							
COATING APERTURE	11.50 X 24.00	11.50 X 24.00	ALL DIMS IN		mm	DWG NO	68058		SHEET 1 OF 1
BEVEL	PROTECTED AS NEEDED	PROTECTED AS NEEDED							