

NOTES:

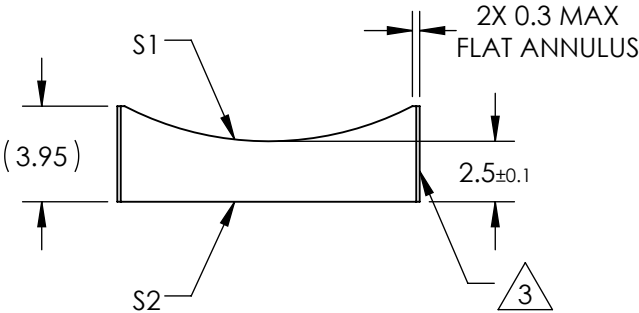
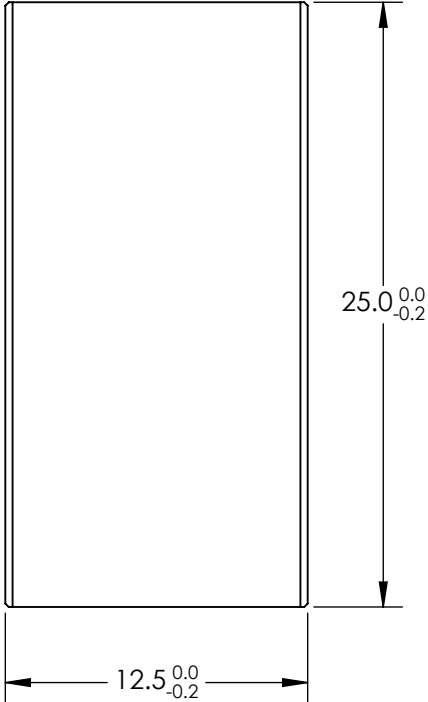
1. SUBSTRATE MATERIAL:  
N-BK7
2. COATING (APPLY ACROSS CLEAR APERTURE)

S1 & S2: MgF2


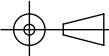
R(avg) ≤1.75% @ 400 - 700nm

3. FINE GROUND SURFACE
4. POWER, IRREGULARITY, AND SURFACE QUALITY  
SPECIFICAIONS APPLY ACROSS CLEAR APERTURE
5. RoHS COMPLIANT

**FOR INFORMATION ONLY:  
DO NOT MANUFACTURE  
PARTS TO THIS DRAWING**



SPECIFICATIONS SUBJECT TO CHANGE WITHOUT NOTICE  
DIMENSIONS ARE FOR REFERENCE ONLY

REV. A	S1	S2	<div><div>EFL</div><div>-25</div></div> <div><div>BFL</div><div>-26.65</div></div> <div><div> Edmund Optics®</div></div>					
SHAPE	CONVEX	PLANO						
RADIUS	-12.92	∞						
SURFACE QUALITY	60-40	60-40	<div>THIRD ANGLE PROJECTION</div> <div></div>		TITLE	12.5mm H X 25mm L X -25mm FL MgF2 COATED, CYLINDER LENS		
CLEAR APERTURE	11.50 X 24.00	11.50 X 24.00						
COATING APERTURE	11.50 X 24.00	11.50 X 24.00						
BEVEL	PROTECTED AS NEEDED	PROTECTED AS NEEDED	ALL DIMS IN	mm	DWG NO	68072	SHEET 1 OF 1	