

NOTES:

- 1. SUBSTRATE MATERIAL:
FUSED SILICA
- 2. COATING (APPLY ACROSS CLEAR APERTURE)

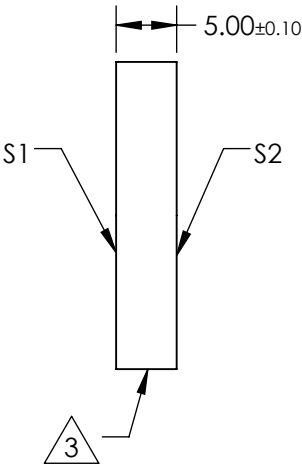
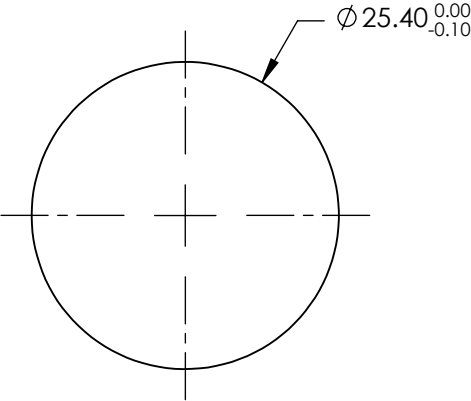
S1: Ultrafast Laser
R(AVG) >99% @ 333 - 353nm

DAMAGE THRESHOLD, PULSED:
1000-on-1: >0.25 J/cm2, 100 fs, 100 Hz, @ 800 nm

S2: NONE

3. FINE GROUND SURFACE

4. RoHS COMPLIANT



SPECIFICATIONS SUBJECT TO CHANGE WITHOUT NOTICE
DIMENSIONS ARE FOR REFERENCE ONLY

REV. A	S1	S2
SHAPE	PLANO	PLANO
CLEAR APERTURE (%)	Ø22.86	N/A
SURFACE QUALITY	20-10	COMMERCIAL POLISH
SURFACE FLATNESS	λ/8	N/A
BEVEL	PROTECTIVE AS NEEDED	PROTECTIVE AS NEEDED

THIRD ANGLE PROJECTION		Edmund Optics®	
TITLE		333 - 353nm, 25.4mm Dia., Ultrafast Laser Line Mirror	
ALL DIMS IN	mm	DWG NO	85332
		SHEET 1 OF 1	