

NOTES:

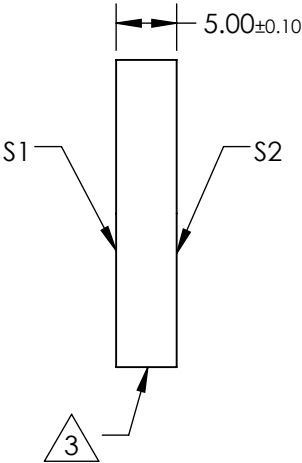
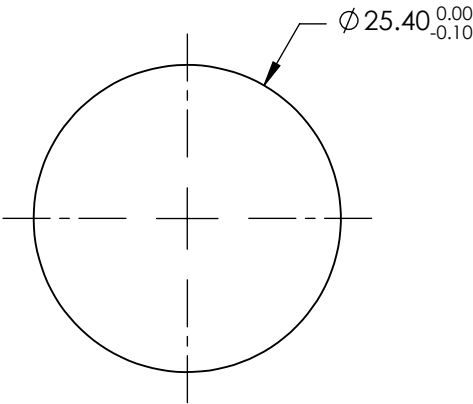
1. SUBSTRATE MATERIAL:
FUSED SILICA
2. COATING (APPLY ACROSS CLEAR APERTURE)

S1: Ultrafast Laser
R(AVG) >99% @ 360 - 440nm

S2: NONE
3.

FINE GROUND SURFACE
4. RoHS COMPLIANT

FOR INFORMATION ONLY:
DO NOT MANUFACTURE
PARTS TO THIS DRAWING



SPECIFICATIONS SUBJECT TO CHANGE WITHOUT NOTICE
DIMENSIONS ARE FOR REFERENCE ONLY

REV. A	S1	S2
SHAPE	PLANO	PLANO
CLEAR APERTURE (%)	Ø22.86	N/A
SURFACE QUALITY	20-10	COMMERCIAL POLISH
SURFACE FLATNESS	λ/8	N/A
BEVEL	PROTECTIVE AS NEEDED	PROTECTIVE AS NEEDED

THIRD ANGLE PROJECTION		Edmund Optics®		
TITLE		360 - 440nm, 25.4mm Dia. x 5.00mm Thickness, Ultrafast Broadband Laser Mirror		
ALL DIMS IN	mm	DWG NO	84621	SHEET 1 OF 1