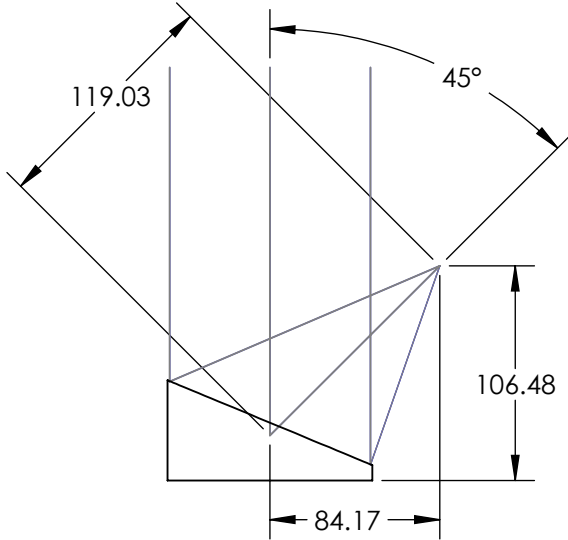
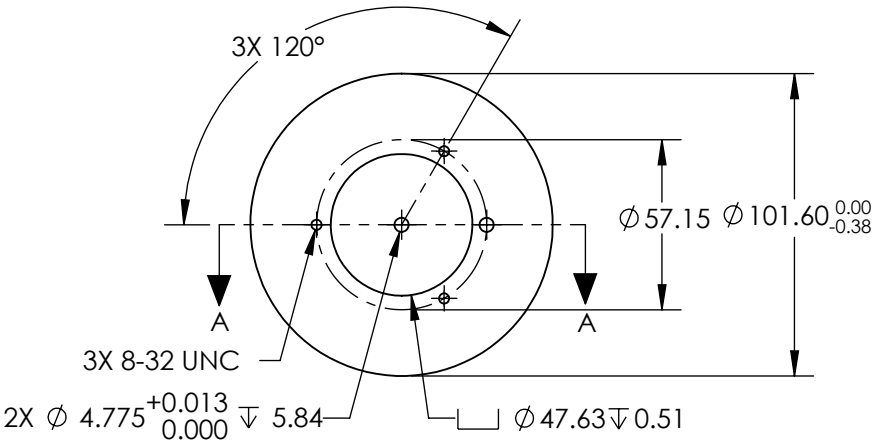
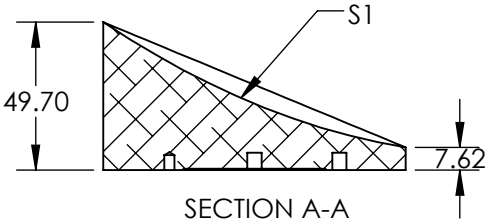



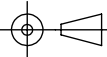
NOTES:

1. SUBSTRATE MATERIAL:  
ALUMINUM
2. FINISH (EXCEPT SURFACE S1):  
BLACK ANODIZED
3. COATING (APPLY ACROSS CLEAR APERTURE)  
S1: PROTECTED ALUMINUM  
R(AVG) >85% from 0.4-0.7 $\mu$ m  
R(AVG) >97% from 2 - 12 $\mu$ m  
  
SURFACE ROUGHNESS: <100 Å RMS
4. FOCAL LENGTH TOLERANCE:  $\pm 1\%$
5. ROHS COMPLIANT

**FOR INFORMATION ONLY:  
DO NOT MANUFACTURE  
PARTS TO THIS DRAWING**



SPECIFICATIONS SUBJECT TO CHANGE WITHOUT NOTICE  
DIMENSIONS ARE FOR REFERENCE ONLY

REV. A	S1	EFL	119.03	 <b>Edmund Optics®</b>		
SHAPE	PARABOLIC	PFL	101.60			
REFLECTIVE WAVEFRONT DISTORTION AT 632.8nm (RMS)	2 $\lambda$	THIRD ANGLE PROJECTION 	TITLE	$\phi 101.6 \times 119.03$ mm EFL 45° OAP PROTECTED ALUMINUM MIRROR 100Å		
SURFACE FIGURE AT 632.8nm (RMS)	1 $\lambda$					
CLEAR APERTURE	90%	ALL DIMS IN	mm	DWG NO	35628	SHEET 1 OF 1
BEVEL	PROTECTIVE AS NEEDED					