

NOTES:

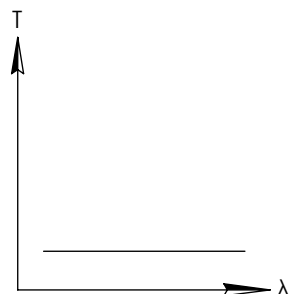
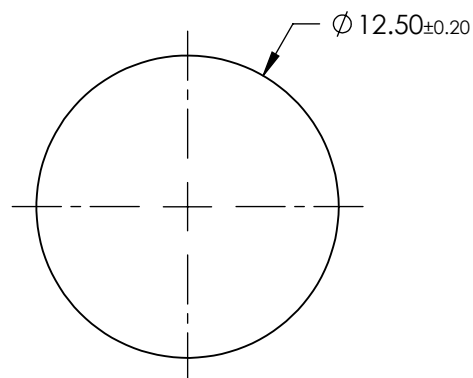
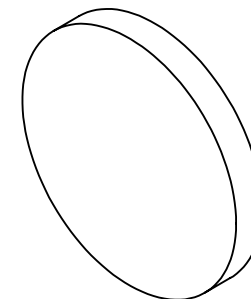
1. SUBSTRATE: FUSED SILICA
2. SURFACE S2 TO BE PARALLEL WITH SURFACE S1 TO WITHIN < 10 ARCMINS
3. COATING(APPLY ACROSS CLEAR APERTURE)
METALLIC BASED ND, OPTICAL DENSITY (abs) = 5.0 ± 10% FROM 700 - 1100nm

4. FINE GROUND SURFACE

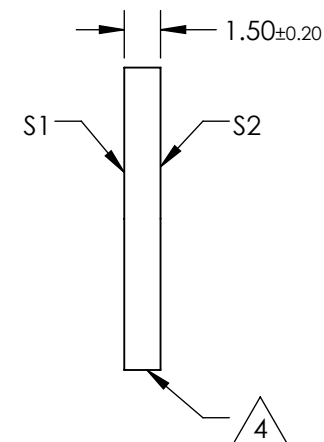
5. POWER, IRREGULARITY, AND SURFACE QUALITY SPECIFICATIONS APPLY ACROSS CLEAR APERTURE

6. ROHS COMPLIANT

**FOR INFORMATION ONLY:
DO NOT MANUFACTURE
PARTS TO THIS DRAWING**



IR NEUTRAL DENSITY FILTER



SPECIFICATIONS SUBJECT TO CHANGE WITHOUT NOTICE
DIMENSIONS ARE FOR REFERENCE ONLY

	S1	S2
SHAPE	PLANO	PLANO
SURFACE FLATNESS	3 - 5λ	3 - 5λ
SURFACE QUALITY	40-20	40-20
CLEAR APERTURE	Ø10.0	Ø10.0
BEVEL	PROTECTIVE AS NEEDED	PROTECTIVE AS NEEDED

THIRD ANGLE
PROJECTION

ALL DIMS IN

mm



Edmund Optics®

TITLE

FILTER FS NIR ND REF Ø12.5mm 5 OD

DWG NO

36436

SHEET
1 OF 1