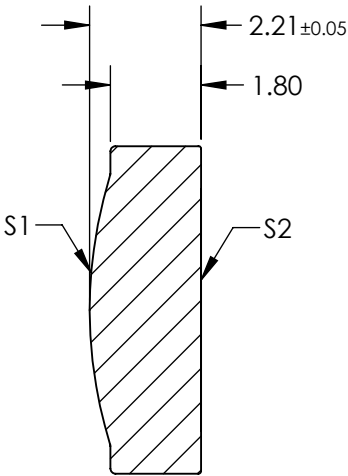
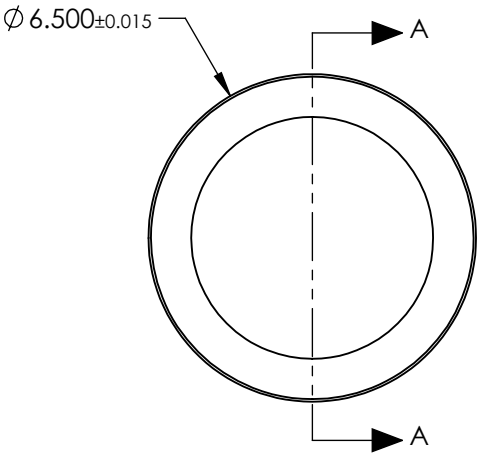


NOTES:

- 1. SUBSTRATE:  
D-ZK3
- 2. NUMERICAL APERTURE: 0.16
- 3. COATING  
S1 & S2: R (AVG) ≤ 0.5% @ 350 - 700nm
- 4. FOCAL LENGTH TOLERANCE: ±1%
- 5. TRANSMITTED WAVEFRONT ERROR (λ, RMS): < 0.090



SECTION A-A

**FOR INFORMATION ONLY:  
DO NOT MANUFACTURE  
PARTS TO THIS DRAWING**

SPECIFICATIONS SUBJECT TO CHANGE WITHOUT NOTICE  
DIMENSIONS ARE FOR REFERENCE ONLY

	S1	S2
SHAPE	CONVEX	PLANO
SURFACE QUALITY	40-20	40-20
CLEAR APERTURE	Ø5.38	Ø5.38
BEVEL	PROTECTIVE AS NEEDED	PROTECTIVE AS NEEDED

EFL	15.29
BFL	14.00
THIRD ANGLE PROJECTION	
ALL DIMS IN	mm

Edmund Optics®			
TITLE	0.16 NA 15.29mm FL 350-700nm AR Coated, Molded Aspheric Lens		
DWG NO	37098	SHEET 1 OF 1	