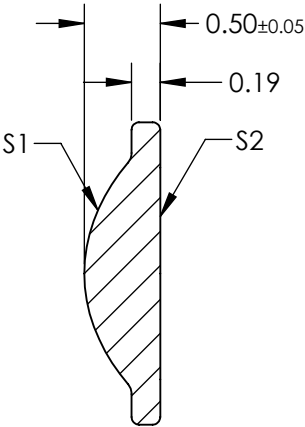
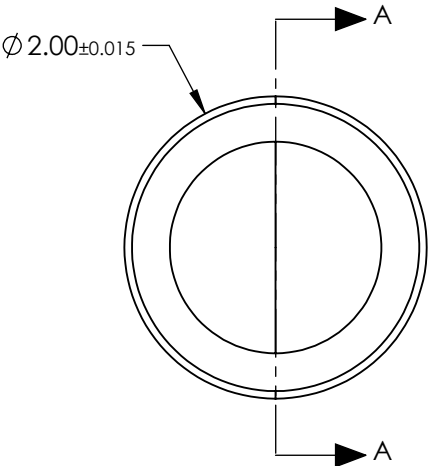


- NOTES:
- 1. SUBSTRATE:
D-LaK6
 - 2. NUMERICAL APERTURE: 0.5
 - 3. COATING:
R(ABS) < 1.0% @ 350 - 500nm
 - 4. FOCAL LENGTH TOLERANCE: ±1%
 - 5. RoHS: COMPLIANT



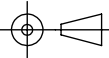
SECTION A-A

**FOR INFORMATION ONLY:
DO NOT MANUFACTURE
PARTS TO THIS DRAWING**

SPECIFICATIONS SUBJECT TO CHANGE WITHOUT NOTICE
DIMENSIONS ARE FOR REFERENCE ONLY

	S1	S2
SHAPE	CONVEX	PLANO
SURFACE QUALITY	40-20	40-20
MIN CLEAR APERTURE	Ø1.52	Ø1.52
BEVEL MAX FACE	PROTECTIVE AS NEEDED	PROTECTIVE AS NEEDED

THIRD ANGLE
PROJECTION



ALL DIMS IN

mm



Edmund Optics®

TITLE

408. 0.50 NA, BBAR COATED, ASPHERIC LENS

DWG NO

37108

SHEET
1 OF 1