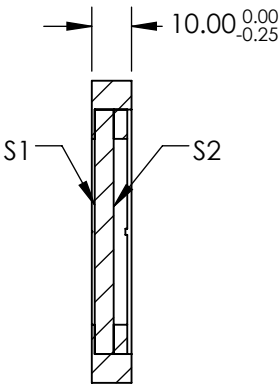
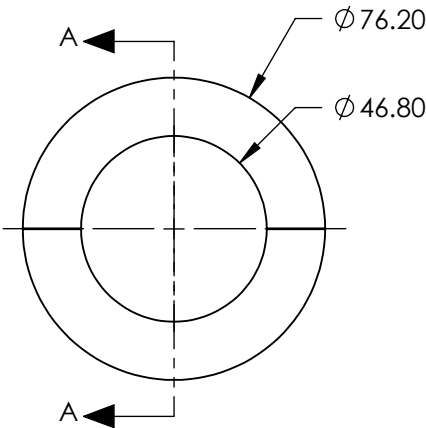
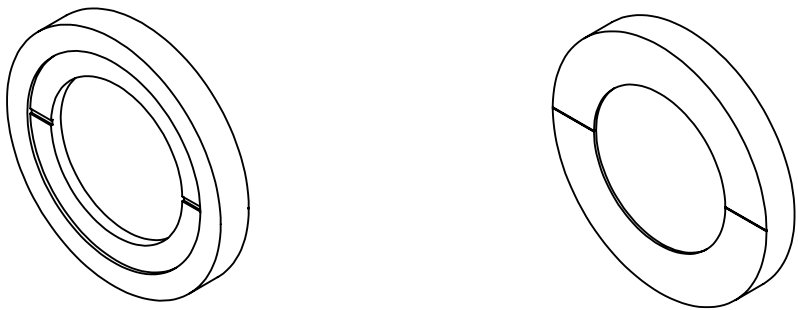


- NOTES:
- 1. SUBSTRATE:
CRYSTAL QUARTZ
 - 2. COATING (APPLY ACROSS CLEAR APERTURE)
S1 & S2: R(ABS) <0.25% @ 800nm
DAMAGE THRESHOLD: 3.5 J/cm² @ 10ns @ 1064nm
 - 3. SURFACE S1 TO BE PARALLEL TO SURFACE S2 TO WITHIN <0.5 arcsec
 - 4. RETARDANCE: $\lambda/2 \pm \lambda/200$
 - 5. TRANSMITTED WAVEFRONT: $\lambda/10$ FOR CENTRAL 80% OF CLEAR APERTURE
 - 6. RoHS COMPLIANT

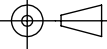


SECTION A-A

**FOR INFORMATION ONLY:
DO NOT MANUFACTURE
PARTS TO THIS DRAWING**

SPECIFICATIONS SUBJECT TO CHANGE WITHOUT NOTICE
DIMENSIONS ARE FOR REFERENCE ONLY

 **Edmund Optics®**

	S1	S2	THIRD ANGLE PROJECTION 	TITLE	76.2mm DIA. 800nm $\lambda/2$ QUARTZ WAVEPLATE ZERO ORDER	
CLEAR APERTURE	$\phi 46.0$	$\phi 46.0$		DWG NO	85066	SHEET 1 OF 1
SURFACE QUALITY	10-5	10-5	ALL DIMS IN mm			