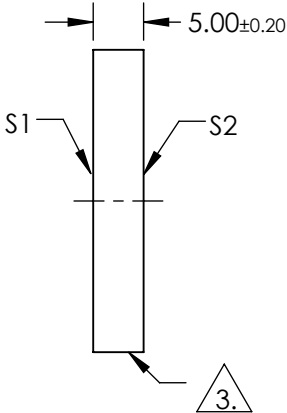
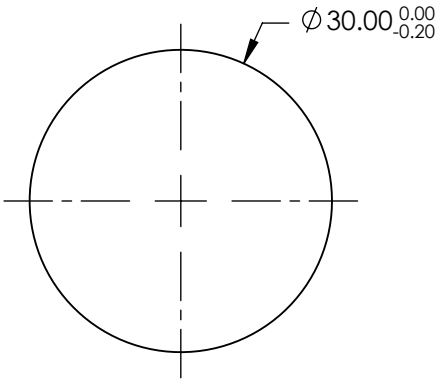


NOTES:

1. SUBSTRATE:
FUSED SILICA
2. COATING (APPLY ACROSS COATING APERTURE):
- S1: R(AVG) ≥ 98% @ 340-488nm @ 0° AOI
R(AVG) ≥ 98% @ 320-450nm @ 45° AOI FOR ALL POLARIZATION
R(AVG) ≥ 98% @ 320-450nm @ 45° FOR S-POLARIZATION
- S2: NONE

3. FINE GRIND SURFACE

FOR INFORMATION ONLY:
DO NOT MANUFACTURE
PARTS TO THIS DRAWING



SPECIFICATIONS SUBJECT TO CHANGE WITHOUT NOTICE
DIMENSIONS ARE FOR REFERENCE ONLY

	S1	S2
SHAPE	PLANO	PLANO
CLEAR APERTURE	> 90	N/A
SURFACE QUALITY	20-10	COMMERCIAL POLISH
SURFACE FLATNESS	$\lambda/10$	N/A
BEVEL	PROTECTIVE AS NEEDED	PROTECTIVE AS NEEDED

EO® Edmund Optics®

THIRD ANGLE PROJECTION		TITLE	Ø30mm, 320 - 450nm BROADBAND $\lambda/10$ MIRROR	
ALL DIMS IN	mm	DWG NO	37568	SHEET 1 OF 1