

NOTES:

1. SUBSTRATE MATERIAL:
FUSED SILICA
2. COATING (APPLY ACROSS CLEAR APERTURE)

S1 & S2: UV-VIS

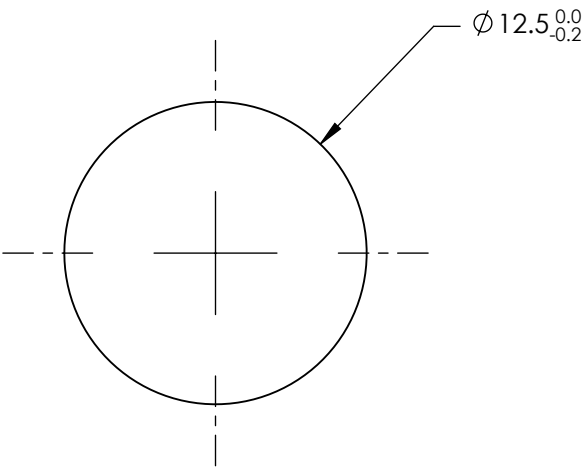
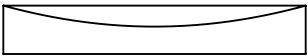
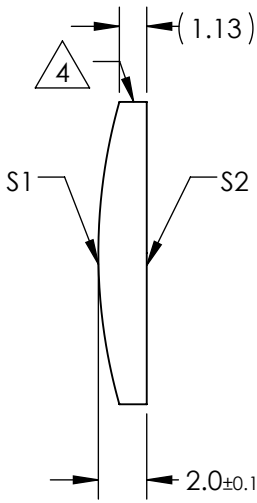
R(abs) ≤1.0% @ 350 - 450nm
R(avg) ≤1.5% @ 250 - 700nm

3. WEDGE TOLERANCE: <15 arcmin


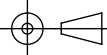
4. FINE GROUND SURFACE

5. POWER, IRREGULARITY, AND SURFACE QUALITY
SPECIFICATIONS APPLY ACROSS CLEAR APERTURE
6. RoHS COMPLIANT

**FOR INFORMATION ONLY:
DO NOT MANUFACTURE
PARTS TO THIS DRAWING**



SPECIFICATIONS SUBJECT TO CHANGE WITHOUT NOTICE
DIMENSIONS ARE FOR REFERENCE ONLY

REV. A	S1	S2	EFL	50	 Edmund Optics®		
SHAPE	CONVEX	PLANO	BFL	48.63			
RADIUS	22.93	∞			TITLE	12.5mm DIAMETER X 50mm FL UV-VIS COATED, UV PCX CYLINDER LENS	
SURFACE QUALITY	40-20	40-20					
CLEAR APERTURE	Ø11.50	Ø11.50	ALL DIMS IN		DWG NO	86043	
COATING APERTURE	Ø11.50	Ø11.50					
BEVEL	PROTECTED AS NEEDED	PROTECTED AS NEEDED	mm				SHEET 1 OF 1