

NOTES:

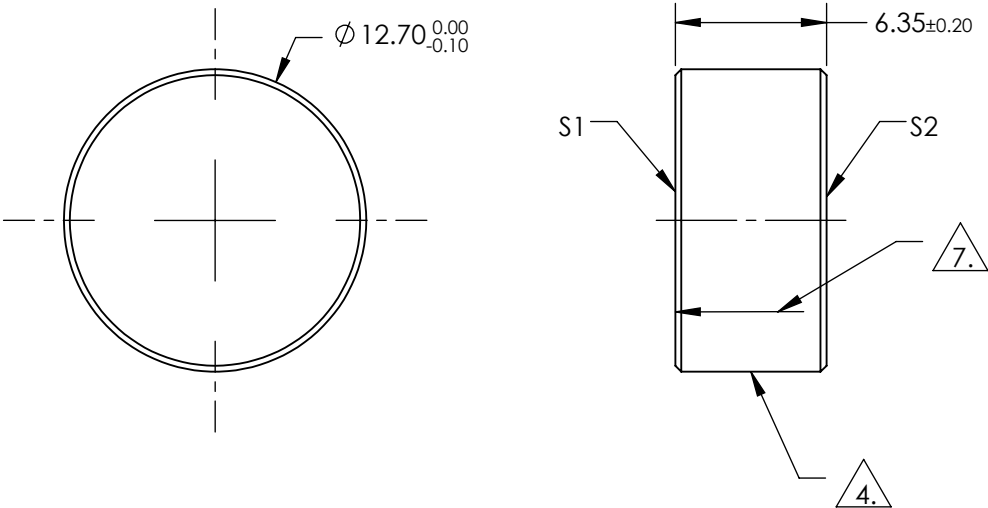
1. SUBSTRATE  
FUSED SILICA
2. SURFACE S2 TO BE PARALLEL TO SURFACE S1 TO WITHIN <3 ARCMIN
3. COATING (APPLY ACROSS COATING APERTURE):

S1: 532 HR Coating  
R (ABS) > 99.80% @ 532nm @ 45° AOI  
R (AVG) > 99.5% @ 523 - 537nm @ 45° AOI

DAMAGE THRESHOLD,  
PULSED: 15 J/cm², 20ns, 20Hz @ 532nm  
CW: 1MW/cm² @ 532nm


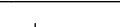
S2: NONE

4. FINE GRIND SURFACE
5. POWER, IRREGULARITY, AND SURFACE QUALITY SPECIFICATIONS APPLY  
ACROSS CLEAR APERTURE
6. CLEAR APERTURE AND COATING APERTURE ARE CENTERED ON SURFACES
7. APPLY ARROW ON EDGE WITH LASER ETCH, PENCIL, OR PERMANENT INK  
POINTING TOWARDS SURFACE S1



**FOR INFORMATION ONLY:  
DO NOT MANUFACTURE  
PARTS TO THIS DRAWING**

SPECIFICATIONS SUBJECT TO CHANGE WITHOUT NOTICE  
DIMENSIONS ARE FOR REFERENCE ONLY

	S1	S2	<div><div> Edmund Optics®</div></div>				
SHAPE	PLANO	PLANO					
SURFACE QUALITY	10-5	COMMERCIAL POLISH					
SURFACE FLATNESS	0.10 WAVE	N/A	<div>THIRD ANGLE PROJECTION</div> 		TITLE	Ø12.7mm x 6.35mm, 532nm, NdYAG MIRROR 45° AOI	
MIN CLEAR APERTURE	Ø11.43	N/A					
MIN COATING APERTURE	Ø11.43	N/A					
BEVEL	PROTECTIVE AS NEEDED	PROTECTIVE AS NEEDED	ALL DIMS IN	mm	DWG NO	34823	SHEET 1 OF 1

**Edmund Optics®**