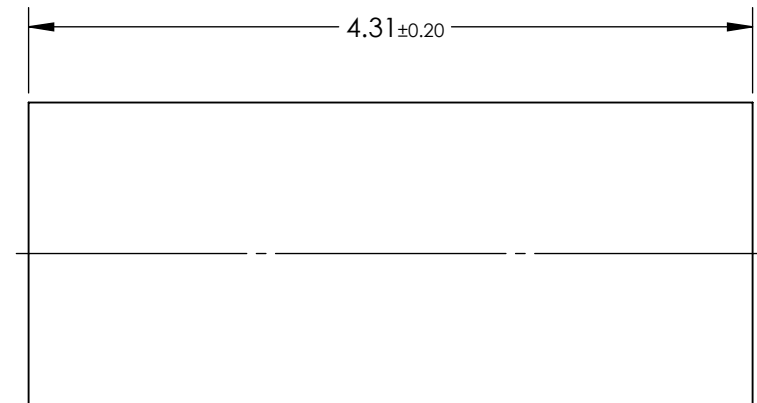
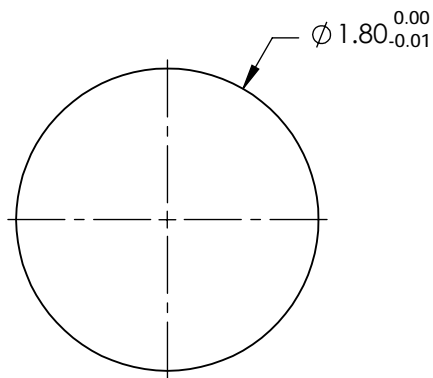



1. SUBSTRATE:  
Alumosilicate Glass Embedded with Silver Ions
2. COATING (APPLY ACROSS COATING APERTURE)  
S1 & S2: Uncoated
3. EFL: 1.69
4. f/# : 0.94
5. NUMERICAL APERTURE: 0.52
6. DESIGN WAVELENGTH: 670nm
7. WORKING DISTANCE: 0mm
8. ROHS: COMPLIANT



**FOR INFORMATION ONLY:  
DO NOT MANUFACTURE  
PARTS TO THIS DRAWING**

SPECIFICATIONS SUBJECT TO CHANGE WITHOUT NOTICE  
DIMENSIONS ARE FOR REFERENCE ONLY



	S1	S2	<div> <div>THIRD ANGLE PROJECTION</div>  </div>		<div> <div>TITLE</div> <div>1.8mm Dia, 670nm DWL, 0.0mm WD, Uncoated, GRIN Lens</div> </div>		
SHAPE	PLANO	PLANO					
SURFACE QUALITY	40-20	40-20	<div> <div>ALL DIMS IN</div> <div>mm</div> </div>		<div> <div>DWG NO</div> <div>64519</div> </div>		<div> <div>SHEET</div> <div>1 OF 1</div> </div>
CLEAR APERTURE	Ø1.62	Ø1.62					