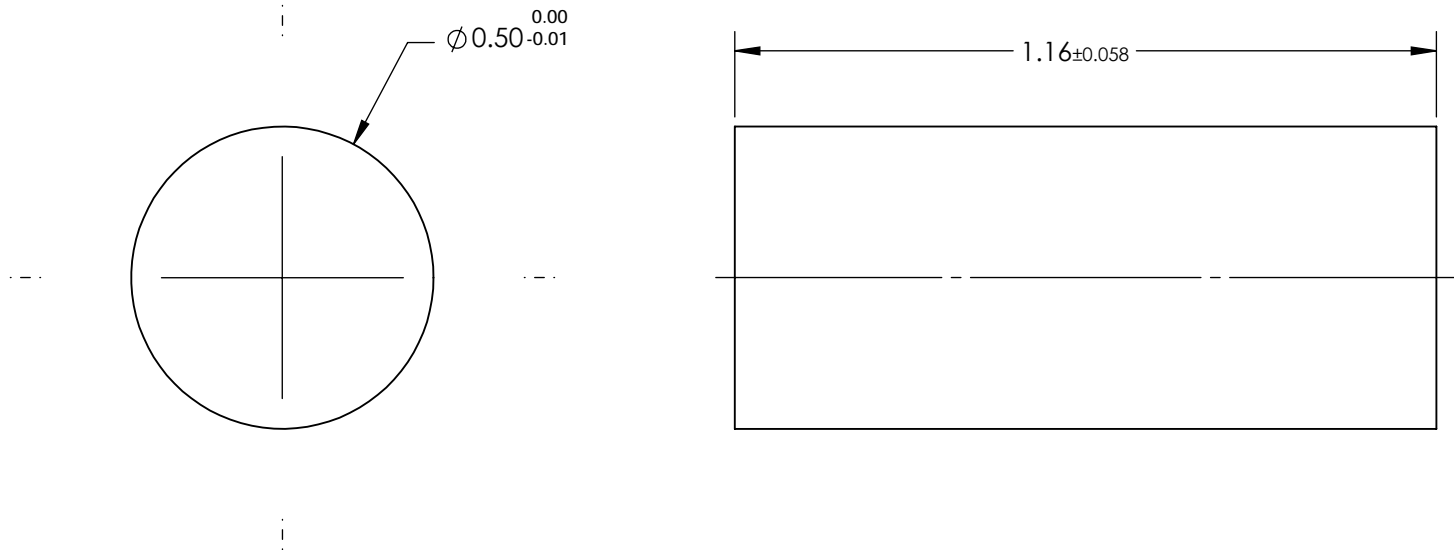


NOTES:

- 1. SUBSTRATE:
Alumoscilate Glass Embedded with Silver Ions
- 2. COATING (APPLY ACROSS COATING APERTURE)
S1 & S2: Uncoated
- 3. EFL: 0.45
- 4. f/# : 0.9
- 5. NUMERICAL APERTURE: 0.53
- 6. DESIGN WAVELENGTH: 810nm
- 7. WORKING DISTANCE: 0mm ±0.02
- 8. ROHS: COMPLIANT



**FOR INFORMATION ONLY:
DO NOT MANUFACTURE
PARTS TO THIS DRAWING**

SPECIFICATIONS SUBJECT TO CHANGE WITHOUT NOTICE
DIMENSIONS ARE FOR REFERENCE ONLY

EO[®] Edmund Optics[®]

| | | | | | | | |
|-----------------|-------|-------|---------------------------------------|----|--------|--|-----------------|
| | S1 | S2 | <div>THIRD ANGLE PROJECTION</div> | | TITLE | 0.5mm Dia, 810nm DWL, 0.0mm WD, Uncoated, GRIN Lens | |
| SHAPE | PLANO | PLANO | | | | | |
| SURFACE QUALITY | 40-20 | 40-20 | ALL DIMS IN | mm | DWG NO | 64521 | SHEET 1 OF 1 |
| CLEAR APERTURE | Ø0.45 | Ø0.45 | | | | | |