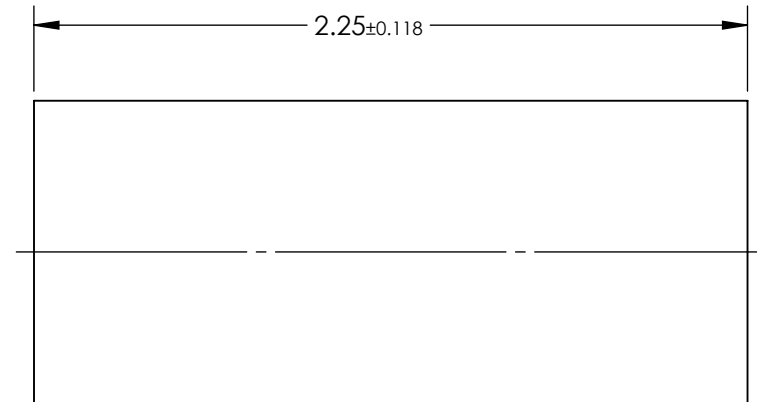
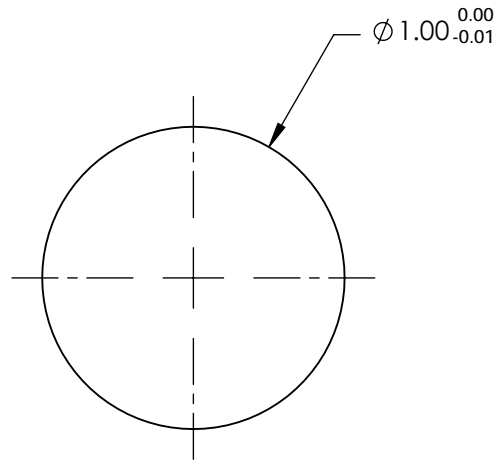


Alumosilicate Glass Embedded with Silver Ions

- S1 & S2: BBAR (450-700nm)
R(AVG) < 0.7%, 0 - 30°

3. EFL: 0.88
4. f/# : 0.88
5. NUMERICAL APERTURE: 0.54
6. DESIGN WAVELENGTH: 670nm
7. WORKING DISTANCE: 0mm \pm 0.02


8. ROHS: COMPLIANT



**FOR INFORMATION ONLY:
DO NOT MANUFACTURE
PARTS TO THIS DRAWING**

SPECIFICATIONS SUBJECT TO CHANGE WITHOUT NOTICE
DIMENSIONS ARE FOR REFERENCE ONLY



	S1	S2	THIRD ANGLE PROJECTION 		TITLE 1.0mm Dia, 670nm DWL, 0.0mm WD, VIS Coated, GRIN Lens		
SHAPE	PLANO	PLANO					
SURFACE QUALITY	40-20	40-20	ALL DIMS IN mm		DWG NO	64535	SHEET 1 OF 1
CLEAR APERTURE	Ø0.9	Ø0.9					