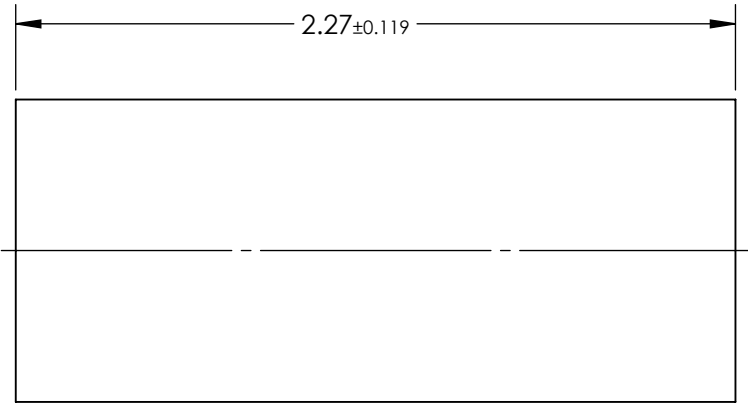
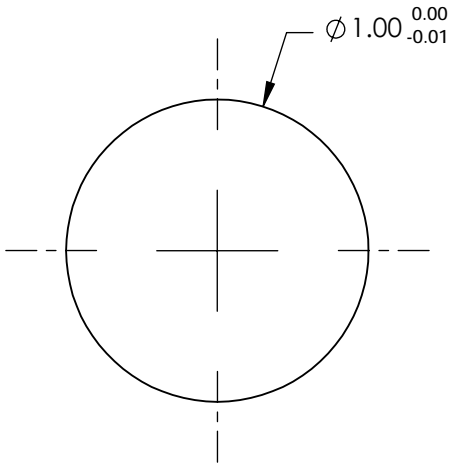


NOTES:

- 1. SUBSTRATE:
Alumoscilate Glass Embedded with Silver Ions
- 2. COATING (APPLY ACROSS COATING APERTURE)
S1 & S2: BBAR (800-1000nm)
R(AVG) < 0.5%, 0 - 30°
- 3. EFL: 0.89
- 4. f/# : 0.89
- 5. NUMERICAL APERTURE: 0.54
- 6. DESIGN WAVELENGTH: 810nm
- 7. WORKING DISTANCE: 0mm ±0.02
- 8. ROHS: COMPLIANT



**FOR INFORMATION ONLY:
DO NOT MANUFACTURE
PARTS TO THIS DRAWING**

SPECIFICATIONS SUBJECT TO CHANGE WITHOUT NOTICE
DIMENSIONS ARE FOR REFERENCE ONLY

EO[®] Edmund Optics[®]

	S1	S2	<div>THIRD ANGLE PROJECTION</div>		TITLE	1.0mm Dia, 810nm DWL, 0.0mm WD, NIR Coated, GRIN Lens	
SHAPE	PLANO	PLANO					
SURFACE QUALITY	40-20	40-20	ALL DIMS IN	mm	DWG NO	64541	SHEET 1 OF 1
CLEAR APERTURE	Ø0.9	Ø0.9					