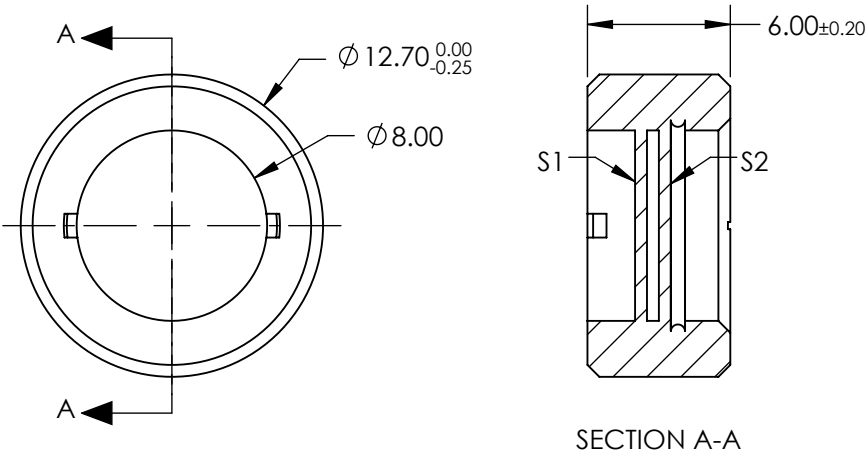


- NOTES:
- 1. SUBSTRATE:
Crystal Quartz and MgF2
 - 2. COATING (APPLY ACROSS COATING APERTURE):
S1 & S2: R(AVG) <0.75% @ 450 - 650nm

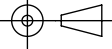
DAMAGE THRESHOLD,
PULSED: >5 J/cm², 10ns @ 10Hz @ 1064nm
 - 3. SURFACE S1 TO BE PARALLEL TO SURFACE S2 TO WITHIN <10 ARCSEC
 - 4. RETARDANCE: $\lambda/2 \pm \lambda/100$ @ 20°C
 - 5. DESIGN WAVELENGTH: 450 - 650 nm
 - 6. TRANSMITTED WAVEFRONT: < $\lambda/4$ @ 632nm
 - 7. CONSTRUCTION: Crystalline
 - 8. ROHS: COMPLIANT



**FOR INFORMATION ONLY:
DO NOT MANUFACTURE
PARTS TO THIS DRAWING**

SPECIFICATIONS SUBJECT TO CHANGE WITHOUT NOTICE
DIMENSIONS ARE FOR REFERENCE ONLY

Edmund Optics®

	S1	S2	THIRD ANGLE PROJECTION 		TITLE	12.7mm Dia, 450 - 650nm, $\lambda/2$ Achromatic Waveplate	
SURFACE QUALITY	40-20	40-20	ALL DIMS IN	mm	DWG NO	39031	SHEET 1 OF 1
CLEAR APERTURE	> Ø8	> Ø8					