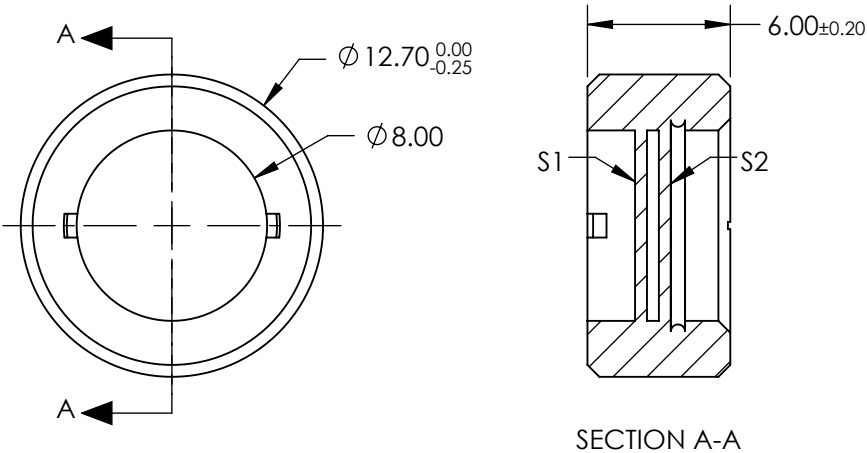


- NOTES:
- SUBSTRATE:  
Crystal Quartz and MgF2
  - COATING (APPLY ACROSS COATING APERTURE):  
S1 & S2: R(AVG) <0.75% @ 650 - 1100nm  
  
DAMAGE THRESHOLD,  
PULSED: >5 J/cm², 10ns @ 10Hz @ 1064nm
  - SURFACE S1 TO BE PARALLEL TO SURFACE S2 TO WITHIN <10 ARCSEC
  - RETARDANCE:  $\lambda/4 \pm \lambda/100$  @ 20°C
  - DESIGN WAVELENGTH: 650 - 1100 nm
  - TRANSMITTED WAVEFRONT: < $\lambda/4$  @ 632nm
  - CONSTRUCTION: Crystalline
  - ROHS: COMPLIANT



**FOR INFORMATION ONLY:  
DO NOT MANUFACTURE  
PARTS TO THIS DRAWING**

SPECIFICATIONS SUBJECT TO CHANGE WITHOUT NOTICE  
DIMENSIONS ARE FOR REFERENCE ONLY

**Edmund Optics®**

	S1	S2	THIRD ANGLE PROJECTION		TITLE	12.7mm Dia, 650 - 1100nm, $\lambda/4$ Achromatic Waveplate	
SURFACE QUALITY	40-20	40-20					
CLEAR APERTURE	> Ø8	> Ø8	ALL DIMS IN	mm	DWG NO	39042	SHEET 1 OF 1