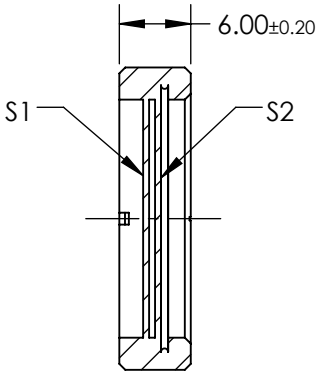
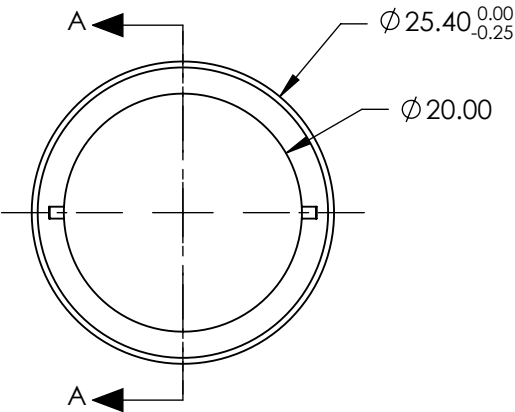


- NOTES:
- 1. SUBSTRATE:
Crystal Quartz and MgF2
 - 2. COATING (APPLY ACROSS COATING APERTURE):
S1 & S2: R(AVG) <0.75% @ 650 - 1100nm

DAMAGE THRESHOLD,
PULSED: >5 J/cm², 10ns @ 10Hz @ 1064nm
 - 3. SURFACE S1 TO BE PARALLEL TO SURFACE S2 TO WITHIN <10 ARCSEC
 - 4. RETARDANCE: $\lambda/4 \pm \lambda/100$ @ 20°C
 - 5. DESIGN WAVELENGTH: 650 - 1100 nm
 - 6. TRANSMITTED WAVEFRONT: < $\lambda/4$ @ 632nm
 - 7. CONSTRUCTION: Crystalline
 - 8. ROHS: COMPLIANT

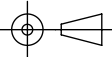


SECTION A-A

**FOR INFORMATION ONLY:
DO NOT MANUFACTURE
PARTS TO THIS DRAWING**

SPECIFICATIONS SUBJECT TO CHANGE WITHOUT NOTICE
DIMENSIONS ARE FOR REFERENCE ONLY

EO[®] Edmund Optics[®]

	S1	S2	THIRD ANGLE PROJECTION 		TITLE	25.4mm Dia, 650 - 1100nm, $\lambda/4$ Achromatic Waveplate	
SURFACE QUALITY	40-20	40-20	ALL DIMS IN	mm	DWG NO	39044	SHEET 1 OF 1
CLEAR APERTURE	> $\phi 20$	> $\phi 20$					