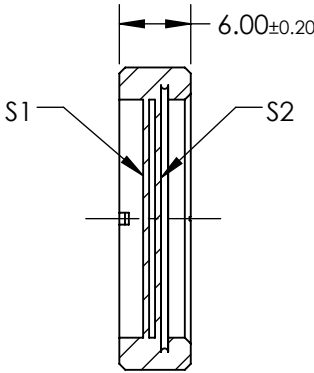
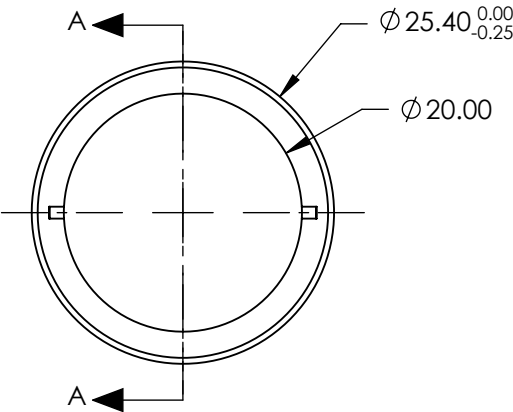


NOTES:

- 1. SUBSTRATE:  
Crystal Quartz and MgF2
- 2. COATING (APPLY ACROSS COATING APERTURE):  
S1 & S2: R(AVG) <0.75% @ 650 - 1100nm  
  
DAMAGE THRESHOLD,  
PULSED: >5 J/cm², 10ns @ 10Hz @ 1064nm
- 3. SURFACE S1 TO BE PARALLEL TO SURFACE S2 TO WITHIN <10 ARCSEC
- 4. RETARDANCE:  $\lambda/2 \pm \lambda/100$  @ 20°C
- 5. DESIGN WAVELENGTH: 650 - 1100 nm
- 6. TRANSMITTED WAVEFRONT: < $\lambda/4$  @ 632nm
- 7. CONSTRUCTION: Crystalline
- 8. ROHS: COMPLIANT

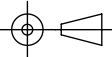


SECTION A-A

**FOR INFORMATION ONLY:  
DO NOT MANUFACTURE  
PARTS TO THIS DRAWING**

SPECIFICATIONS SUBJECT TO CHANGE WITHOUT NOTICE  
DIMENSIONS ARE FOR REFERENCE ONLY

**EO<sup>®</sup> Edmund Optics<sup>®</sup>**

	S1	S2	THIRD ANGLE PROJECTION 		TITLE	25.4mm Dia, 650 - 1100nm, $\lambda/2$ Achromatic Waveplate	
SURFACE QUALITY	40-20	40-20	ALL DIMS IN	mm	DWG NO	39045	SHEET 1 OF 1
CLEAR APERTURE	> $\phi 20$	> $\phi 20$					