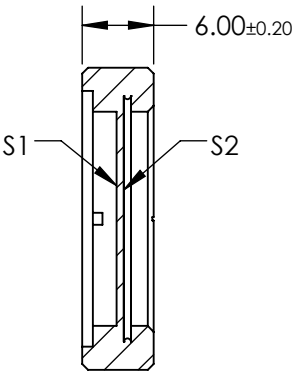
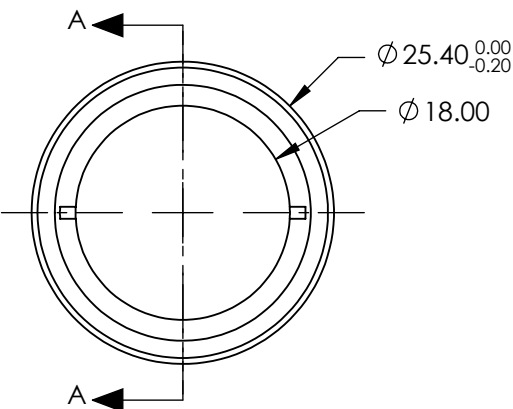


- NOTES:
- 1. SUBSTRATE:
Crystalline Quartz
 - 2. COATING (APPLY ACROSS COATING APERTURE):
S1 & S2: R(AVG) <0.2%
 - DAMAGE THRESHOLD,
PULSED: >20 J/cm², 10ns @ 10Hz @ 1064nm
 - 3. SURFACE S1 TO BE PARALLEL TO SURFACE S2 TO WITHIN <3 ARCSEC
 - 4. RETARDANCE: $\lambda/4 \pm \lambda/300$ @ 20°C
RETARDANCE ORDER: 1st
 - 5. DESIGN WAVELENGTH: 800nm
 - 6. TRANSMITTED WAVEFRONT: < $\lambda/10$ @ 632.8nm
 - 7. ROHS: COMPLIANT

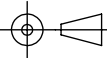


SECTION A-A

**FOR INFORMATION ONLY:
DO NOT MANUFACTURE
PARTS TO THIS DRAWING**

SPECIFICATIONS SUBJECT TO CHANGE WITHOUT NOTICE
DIMENSIONS ARE FOR REFERENCE ONLY

EO[®] **Edmund Optics**[®]

	S1	S2	THIRD ANGLE PROJECTION 		TITLE	25.4mm Dia., 800nm, $\lambda/4$ High Energy Waveplate	
SURFACE QUALITY	20-10	20-10	ALL DIMS IN	mm	DWG NO	39174	SHEET 1 OF 1
CLEAR APERTURE	$\varnothing 18.00$	$\varnothing 18.00$					