

NOTES:

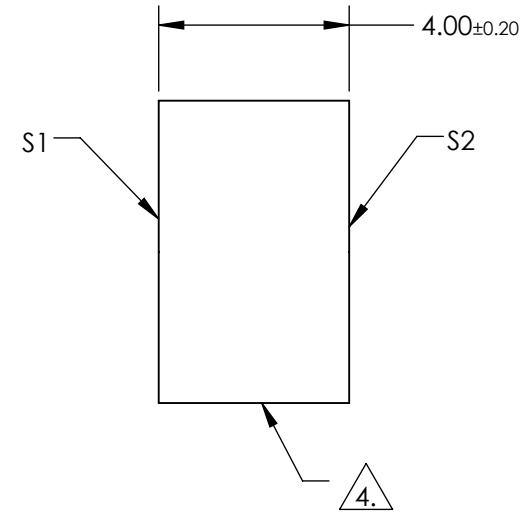
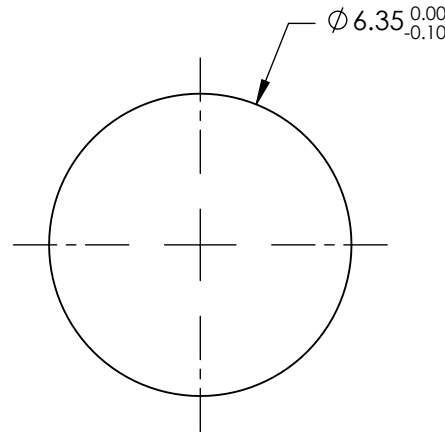
1. SUBSTRATE:  
FUSED SILICA
2. SURFACE S2 TO BE PARALLEL TO S1 TO WITHIN <3 ARCMIN
3. COATING (APPLY ACROSS COATING APERTURE)

S1: R(AVG) ≥ 98% @ 340-488nm @ 0° AOI  
 R(AVG) ≥ 98% @ 320-450nm @ 45° AOI FOR ALL POLARIZATION  
 R(AVG) ≥ 98% @ 320-450nm @ 45° FOR S-POLARIZATION

S2: NONE

4. FINE GRIND SURFACE

5. ROHS COMPLIANT



**FOR INFORMATION ONLY:  
 DO NOT MANUFACTURE  
 PARTS TO THIS DRAWING**

SPECIFICATIONS SUBJECT TO CHANGE WITHOUT NOTICE  
 DIMENSIONS ARE FOR REFERENCE ONLY

	S1	S2
SHAPE	PLANO	PLANO
SURFACE QUALITY	20-10	COMMERCIAL POLISH
SURFACE FLATNESS	$\lambda/10$	N/A
MIN CLEAR APERTURE	Ø5.40	N/A
BEVEL	PROTECTIVE AS NEEDED	PROTECTIVE AS NEEDED

THIRD ANGLE PROJECTION

ALL DIMS IN mm

**Edmund Optics®**

TITLE: MIRROR BROADBAND 320-450nm 6.35mm DIA

DWG NO: 39190

SHEET 1 OF 1