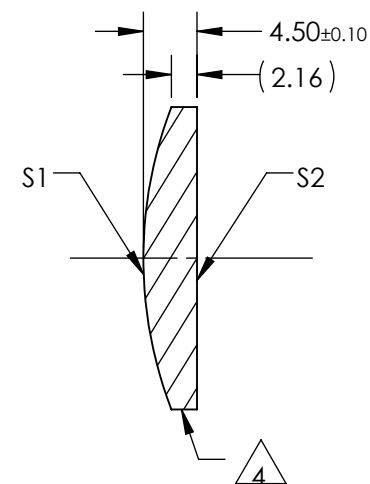
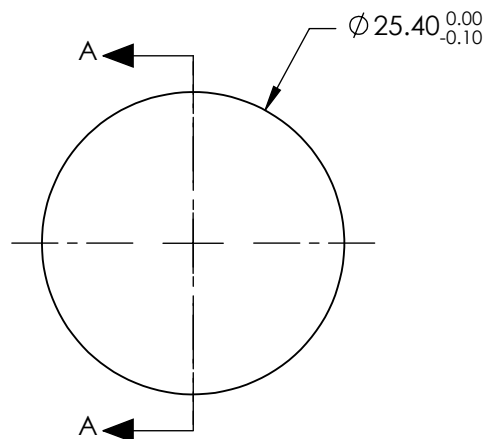

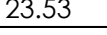
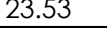


1. SUBSTRATE:  
II-VI Infrared ZnSe
2. CENTERING TOLERANCE:  
EDGE THICKNESS VARIATION MEASURED AT THE CLEAR APERTURE OF S1  
NOT TO EXCEED 12.7µm
3. COATING (APPLY ACROSS COATING APERTURE)  
S1 & S2: NONE

4. FINE GROUND SURFACE
5. POWER, IRREGULARITY, AND SURFACE QUALITY SPECIFICATIONS APPLY ACROSS CLEAR APERTURE
6. WAVELENGTH RANGE: 600 - 18000nm
7. SURFACE ROUGHNESS: <50 Å
8. ROHS: COMPLIANT



**FOR INFORMATION ONLY:  
DO NOT MANUFACTURE  
PARTS TO THIS DRAWING**

		S1	S2			SPECIFICATIONS SUBJECT TO CHANGE WITHOUT NOTICE DIMENSIONS ARE FOR REFERENCE ONLY	
SHAPE		CONVEX	PLANO	EFL (AT 10.6 microns)	25.40	 <b>Edmund Optics®</b>	
RADIUS		35.628	INFINITY	BFL (AT 10.6 microns)	23.53		
SURFACE QUALITY		40-20	40-20			TITLE	25.4mm Dia. x 25.4mm FL, Uncoated, ZnSe Plano-Convex Lens
CLEAR APERTURE		90%	90%				
POWER at 10.6µm		$\lambda/10$	$\lambda/10$	THIRD ANGLE PROJECTION		DWG NO	39530
IRREGULARITY at 10.6µm		$\lambda/20$	$\lambda/20$				
BEVEL		PROTECTIVE AS NEEDED	PROTECTIVE AS NEEDED	ALL DIMS IN	mm		SHEET 1 OF 1

SPECIFICATIONS SUBJECT TO CHANGE WITHOUT NOTICE  
DIMENSIONS ARE FOR REFERENCE ONLY