
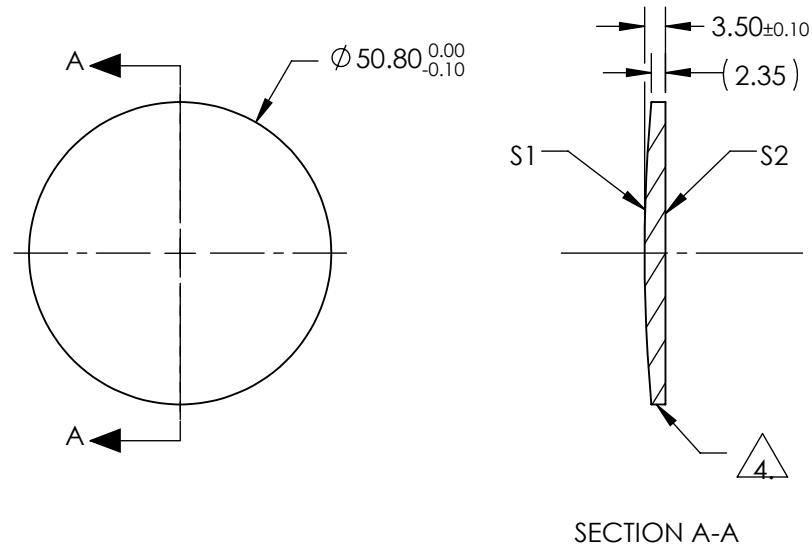

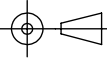


NOTES:

1. SUBSTRATE:  
II-VI Infrared ZnSe
2. CENTERING TOLERANCE:  
EDGE THICKNESS VARIATION MEASURED AT THE CLEAR APERTURE OF S1  
NOT TO EXCEED 12.7 $\mu$ m
3. COATING (APPLY ACROSS COATING APERTURE)  
  
S1 & S2: NONE
4.  FINE GROUND SURFACE
5. POWER, IRREGULARITY, AND SURFACE QUALITY SPECIFICATIONS APPLY  
ACROSS CLEAR APERTURE
6. WAVELENGTH RANGE: 8000 - 12000nm
7. SURFACE ROUGHNESS: <50 Å
8. ROHS: COMPLIANT

**FOR INFORMATION ONLY:  
DO NOT MANUFACTURE  
PARTS TO THIS DRAWING**



	S1	S2	SPECIFICATIONS SUBJECT TO CHANGE WITHOUT NOTICE DIMENSIONS ARE FOR REFERENCE ONLY			
SHAPE	CONVEX	PLANO	 <b>Edmund Optics®</b>			
RADIUS	280.540	INFINITY				
SURFACE QUALITY	40-20	40-20	EFL (AT 10.6 microns)	200.00	TITLE 50.8mm Dia. x 200mm FL, Uncoated, ZnSe Plano-Convex Lens	
CLEAR APERTURE	90%	90%	BFL (AT 10.6 microns)	198.55		
POWER at 10.6 $\mu$ m	$\lambda/10$	$\lambda/10$	THIRD ANGLE PROJECTION 		DWG NO 39541	
IRREGULARITY at 10.6 $\mu$ m	$\lambda/20$	$\lambda/20$				
BEVEL	PROTECTIVE AS NEEDED	PROTECTIVE AS NEEDED	ALL DIMS IN	mm	SHEET 1 OF 1	