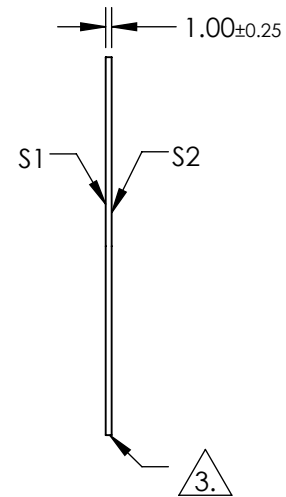
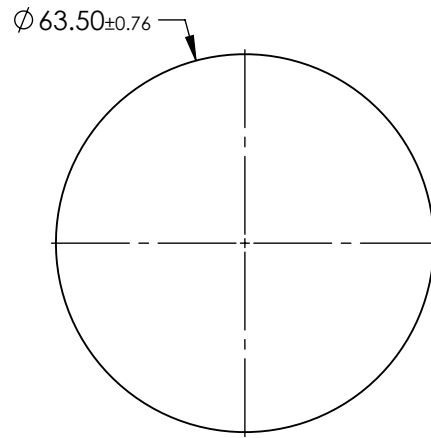
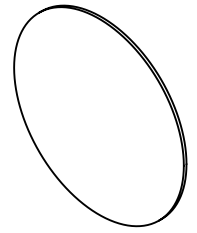


NOTES:

1. SUBSTRATE: FLOAT GLASS
2. COATING (APPLY ACROSS COATING APERTURE)  
S1 & S2: BBAR (425-700nm)  
R(AVG) ≤0.5% @ 425 - 700nm @ 0° AOI

3. FINE GRIND SURFACE

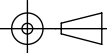
4. RoHS COMPLIANT



**FOR INFORMATION ONLY:  
DO NOT MANUFACTURE  
PARTS TO THIS DRAWING**

SPECIFICATIONS SUBJECT TO CHANGE WITHOUT NOTICE  
DIMENSIONS ARE FOR REFERENCE ONLY

	S1	S2
SHAPE	PLANO	PLANO
SURFACE QUALITY	80-50	80-50
CLEAR APERTURE	Ø57.15	Ø57.15
TRANSMISSION (%)	93 - 94	93 - 94
BEVEL	PROTECTIVE AS NEEDED	PROTECTIVE AS NEEDED

THIRD ANGLE PROJECTION 

ALL DIMS IN mm

**EO**® Edmund Optics®

TITLE	63.5mm DIA. x 1mm HIGH EFFICIENCY WINDOW	
DWG NO	39281	SHEET 1 OF 1