

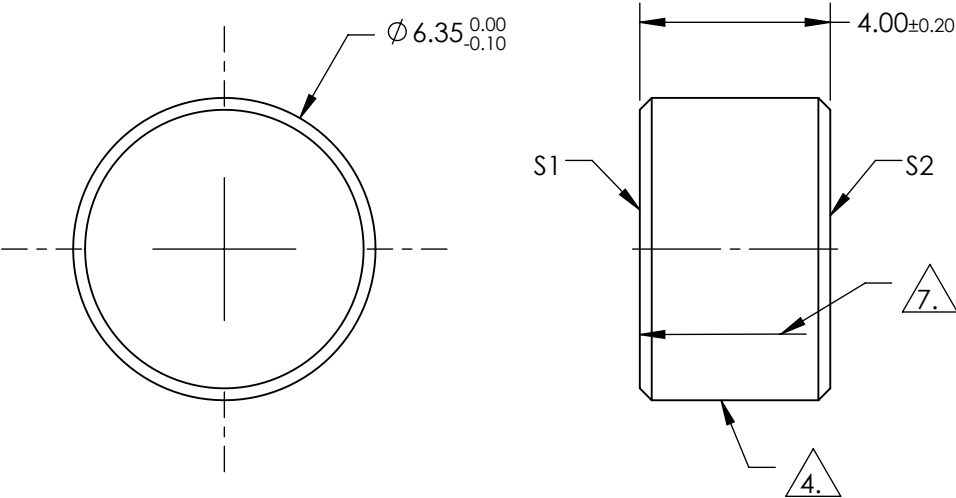
NOTES:

1. SUBSTRATE:
Fused Silica
2. SURFACE S1 TO BE PARALLEL TO SURFACE S2 TO WITHIN <3 ARCMINS
3. COATING (APPLY ACROSS COATING APERTURE)

S1: R(ABS) >99.8% @ 1030nm
DAMAGE THRESHOLD,
PULSED: 15 J/cm² @ 1030nm, 20ns, 20Hz

S2: NONE

4. FINE GROUND SURFACE
5. CLEAR APERTURE AND COATING APERTURE ARE CENTERED ON SURFACE
6. POWER, IRREGULARITY, AND SURFACE QUALITY SPECIFICATIONS APPLY ACROSS CLEAR APERTURE
7. ARROW ON EDGE WITH LASER ETCH, PENCIL, OR PERMANENT INK POINTS TOWARDS SURFACE S1



**FOR INFORMATION ONLY:
DO NOT MANUFACTURE
PARTS TO THIS DRAWING**

SPECIFICATIONS SUBJECT TO CHANGE WITHOUT NOTICE
DIMENSIONS ARE FOR REFERENCE ONLY

	S1	S2				
SHAPE	PLANO	PLANO				
SURFACE QUALITY	10-5	COMMERCIAL POLISH				
SURFACE FLATNESS	0.10 WAVE	N/A				
MIN CLEAR APERTURE	Ø5.40	N/A				
MIN COATING APERTURE	Ø5.40	N/A				
BEVEL	PROTECTIVE AS NEEDED	PROTECTIVE AS NEEDED				

THIRD ANGLE PROJECTION		TITLE		6.35mm Dia. 1030nm 0-45°, Yb:YAG Laser Line Mirror	
ALL DIMS IN	mm	DWG NO	11303	SHEET 1 OF 1	

Edmund Optics®