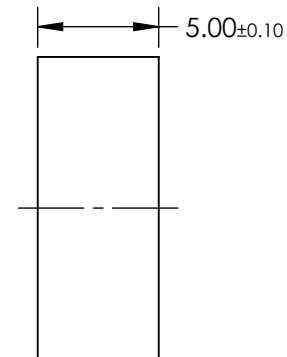
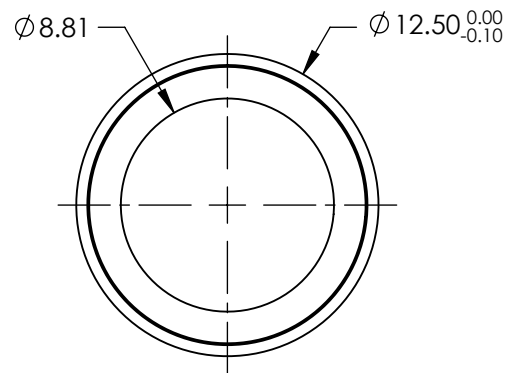
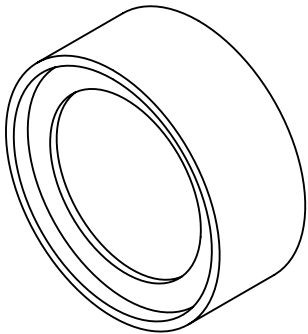


NOTES:

- 1. CONSTRUCTION: MOUNTED IN BLACK ANODIZED RING
- 2. COATING (APPLY ACROSS COATING APERTURE)

DURABILITY: MIL-C-48497A
PERFORMANCE SPECIFICATIONS:
CWL: 1030
FWHM: 51.5
REFLECTION %: >99
TRANSMISSION %: >90
- 3. POWER, IRREGULARITY, AND SURFACE QUALITY SPECIFICATIONS
APPLY ACROSS CLEAR APERTURE
- 4. TRANSMITTED WAVEFRONT DISTORTION RMS@ <1λ
- 5. ROHS COMPLIANT



**FOR INFORMATION ONLY:
DO NOT MANUFACTURE
PARTS TO THIS DRAWING**

SPECIFICATIONS SUBJECT TO CHANGE WITHOUT NOTICE
DIMENSIONS ARE FOR REFERENCE ONLY



	S1	S2	THIRD ANGLE PROJECTION				TITLE	1030nm, 12.5mm DIAMETER, OD 4 NOTCH FILTER	
SHAPE	PLANO	PLANO	ALL DIMS IN	mm	DWG NO	39383	SHEET 1 OF 1		
SURFACE QUALITY	60-40	60-40							
CLEAR APERTURE	Ø8.81	Ø8.81							