

NOTES:

- SUBSTRATE MATERIAL:
FUSED SILICA
- SURFACE S2 TO BE PARALLEL TO SURFACE S1 <10 ARCSEC
- COATING (APPLY ACROSS COATING APERTURE)
S1: ULTRAFAST LASER
Rs >98.5% @ 235 - 280nm @ 0° AOI
Rp >97.5% @ 241 - 271nm @ 0° AOI

DAMAGE THRESHOLD,

PULSED: 0.26 J/cm² @ 258nm, 177fs FWHM, P-POLARIZATION, 1 PULSE (TYPICAL)

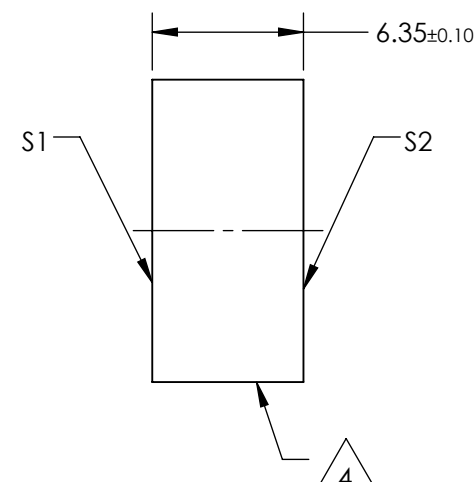
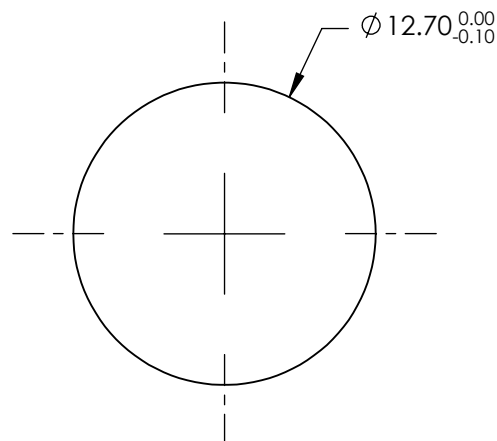
0.2 J/cm² @ 258nm, 177fs FWHM, 10kHz, P-POLARIZATION, 1000 PULSES (TYPICAL)

S2: NONE

GROUP DELAY DISPERSION: 0 ±10fs² @ 241 - 271nm

4. FINE GROUND SURFACE

5. RoHS: COMPLIANT



**FOR INFORMATION ONLY:
DO NOT MANUFACTURE
PARTS TO THIS DRAWING**

SPECIFICATIONS SUBJECT TO CHANGE WITHOUT NOTICE
DIMENSIONS ARE FOR REFERENCE ONLY

	S1	S2
SHAPE	PLANO	PLANO
SURFACE FLATNESS	$\lambda/10$	N/A
SURFACE QUALITY	10-5	COMMERCIAL POLISH
CLEAR APERTURE (%)	>80	N/A
BEVEL	PROTECTIVE AS NEEDED	PROTECTIVE AS NEEDED



ALL DIMS IN

mm

EO® **Edmund Optics**®

TITLE

266nm, 12.7mm Dia., Low GDD Ultrafast Mirror

DWG NO

11734

SHEET
1 OF 1