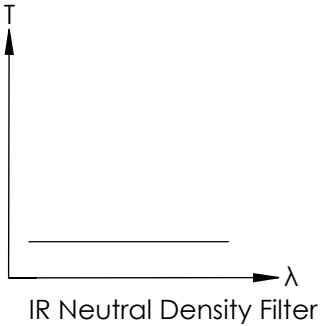
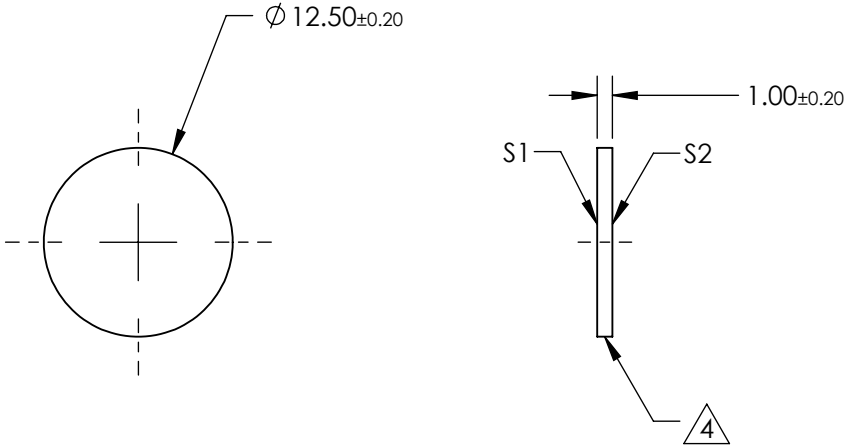



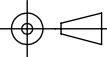
NOTES:

1. SUBSTRATE: Germanium (Ge)
2. SURFACE S2 TO BE PARALLEL WITH SURFACE S1 TO <10 ARCMIN
3. COATING (APPLY ACROSS CLEAR APERTURE)
OPTICAL DENSITY = 0.6 @ 2 - 14 μ m
TRANSMISSION = 25.0 @ 2 - 14 μ m
4. FINE GRIND SURFACE
5. POWER, IRREGULARITY, AND SURFACE QUALITY SPECIFICATIONS
APPLY ACROSS CLEAR APERTURE
6. ROHS COMPLIANT

**FOR INFORMATION ONLY:
DO NOT MANUFACTURE
PARTS TO THIS DRAWING**



SPECIFICATIONS SUBJECT TO CHANGE WITHOUT NOTICE
DIMENSIONS ARE FOR REFERENCE ONLY

	S1	S2	 Edmund Optics®			
SHAPE	PLANO	PLANO				
SURFACE FLATNESS	3 - 5 λ	3 - 5 λ				
SURFACE QUALITY	80-50	80-50				
CLEAR APERTURE	Ø 11.25	Ø 11.25	TITLE			
BEVEL	PROTECTED AS NEEDED	PROTECTED AS NEEDED				
			ALL DIMS IN	mm	DWG NO	12005
						SHEET 6 OF 37