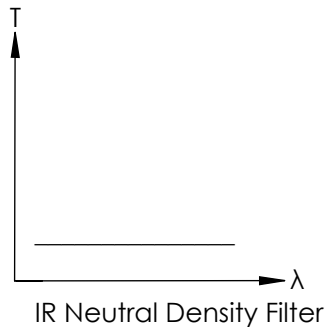
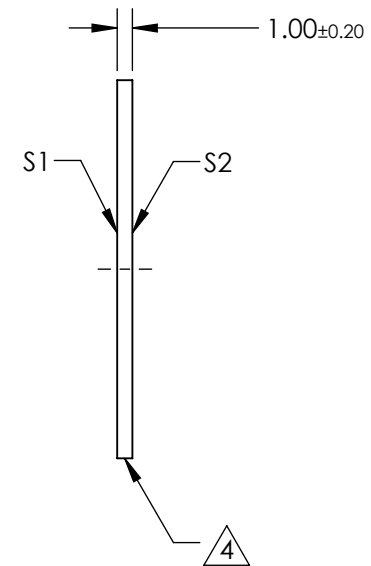
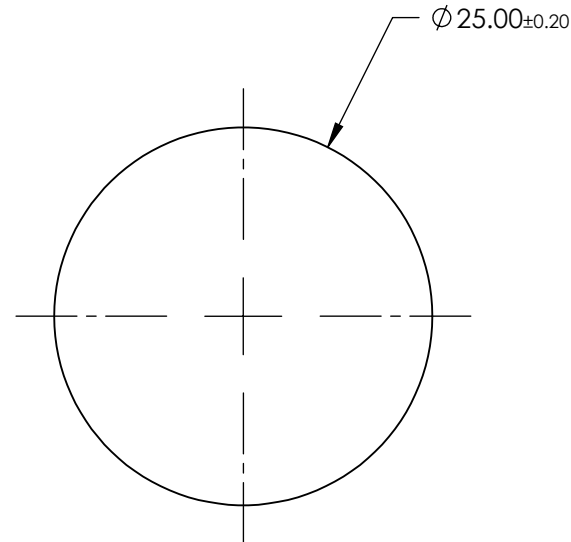
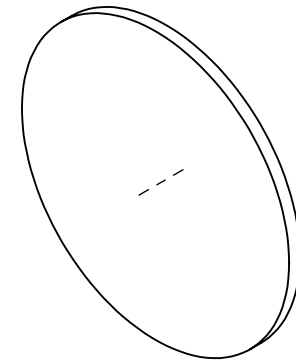


NOTES:

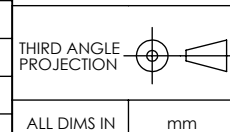
1. SUBSTRATE: Germanium (Ge)
2. SURFACE S2 TO BE PARALLEL WITH SURFACE S1 TO <10 ARCMIN
3. COATING (APPLY ACROSS CLEAR APERTURE)
OPTICAL DENSITY = 1.0 @ 5.8 - 6.4 μm
TRANSMISSION = 10.0 @ 5.8 - 6.4 μm
4. FINE GRIND SURFACE
5. POWER, IRREGULARITY, AND SURFACE QUALITY SPECIFICATIONS
APPLY ACROSS CLEAR APERTURE
6. ROHS COMPLIANT

**FOR INFORMATION ONLY:
DO NOT MANUFACTURE
PARTS TO THIS DRAWING**



SPECIFICATIONS SUBJECT TO CHANGE WITHOUT NOTICE
DIMENSIONS ARE FOR REFERENCE ONLY

	S1	S2
SHAPE	PLANO	PLANO
SURFACE FLATNESS	3 - 5 λ	3 - 5 λ
SURFACE QUALITY	80-50	80-50
CLEAR APERTURE	ϕ 22.5	ϕ 22.5
BEVEL	PROTECTED AS NEEDED	PROTECTED AS NEEDED



Edmund Optics®

TITLE

1.0 OD, 25mm Dia., AR Coated, IR Neutral
Density Filter

DWG NO

12245

SHEET
18 OF 37