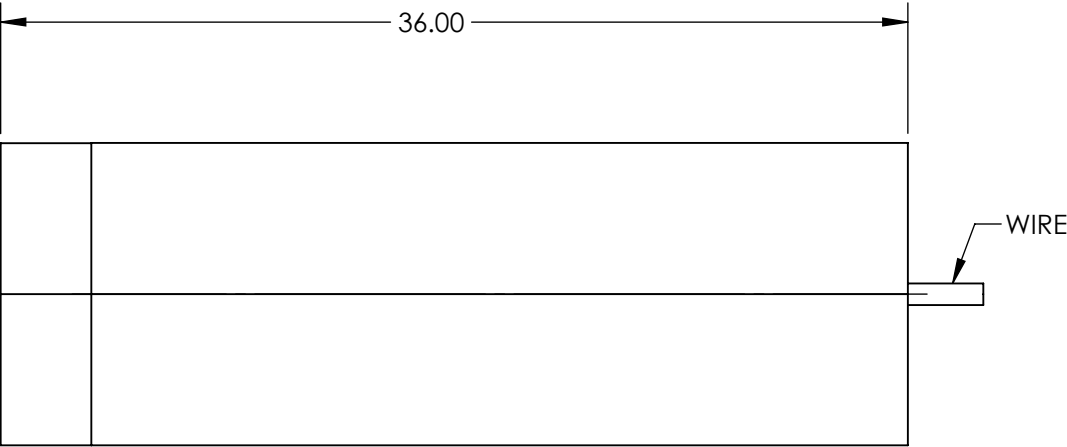
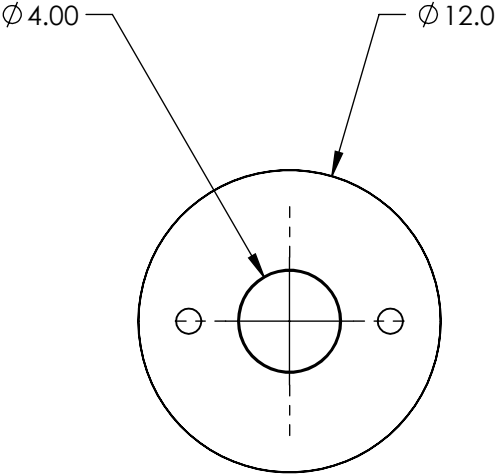
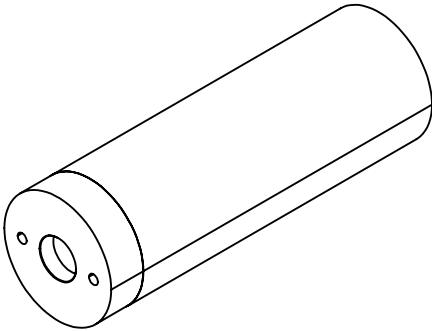



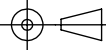
NOTES:

- 1. LASER CLASS:  
IIIb
- 2. BEAM DIAMETER(mm): 3 x 1 Typical  
BEAM DIVERGENCE: Major Axis: 0.6   Minor Axis: 0.2 mrad
- 3. MODULATION FREQUENCY: 0 - 10 kHz
- 4. OPERATING TEMPERATURE: -10 to 50 °C  
OPERATING VOLTAGE: 5 V
- 5. OUTPUT POWER: 5 mW
- 6. WAVELENGTH RANGE: 635 ±5 nm



SPECIFICATIONS SUBJECT TO CHANGE WITHOUT NOTICE  
DIMENSIONS ARE FOR REFERENCE ONLY

**FOR INFORMATION ONLY:  
DO NOT MANUFACTURE  
PARTS TO THIS DRAWING**

 Edmund Optics®			
THIRD ANGLE PROJECTION 		TITLE	5mW, 635nm Alignment Laser Diode
ALL DIMS IN	mm	DWG NO	37030
			SHEET 1 OF 1