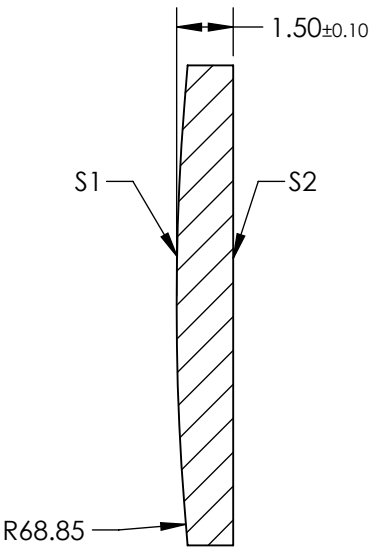
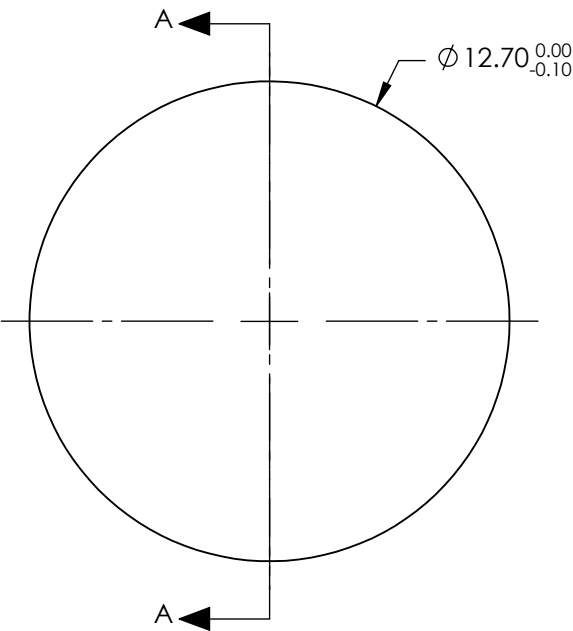


NOTES:

- 1. SUBSTRATE: FUSED SILICA
- 2. COATING:
S1 & S2: R(ABS) <0.1% @ 700 - 900nm
- 3. CENTERING: < 3 ARCMIN
- 4. RoHS: COMPLIANT


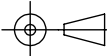
FOR INFORMATION ONLY:
DO NOT MANUFACTURE
PARTS TO THIS DRAWING



SECTION A-A

SPECIFICATIONS SUBJECT TO CHANGE WITHOUT NOTICE
DIMENSIONS ARE FOR REFERENCE ONLY

| | S1 | S2 |
|-----------------|----------------------|----------------------|
| SHAPE | CONVEX | PLANO |
| SURFACE QUALITY | 20-10 | 20-10 |
| CLEAR APERTURE | Ø11.43 | Ø11.43 |
| BEVEL | PROTECTIVE AS NEEDED | PROTECTIVE AS NEEDED |

| | | | | |
|---|----|--|--|-----------------|
| EFL: 150.17 mm | |  Edmund Optics® | | |
| BFL: 149.15 mm | | | | |
|  | | TITLE | 12.7mm Diameter x 150mm FL, 700-900nm Coated, Ultrafast Thin PCX Lens | |
| ALL DIMS IN | mm | DWG NO | 11656 | SHEET 1 OF 1 |