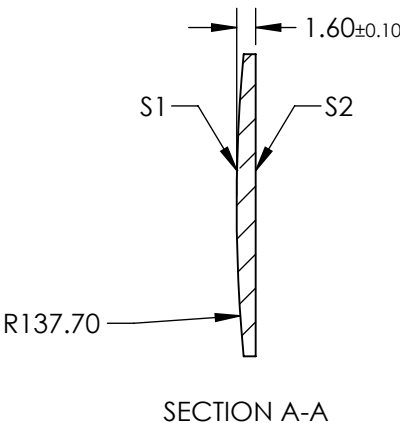
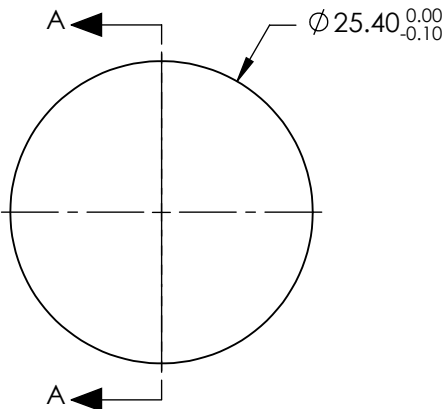


NOTES:


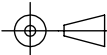
- 1. SUBSTRATE: FUSED SILICA
- 2. COATING:  
S1 & S2: R(ABS) <0.5% @ 370 - 550nm
- 3. CENTERING: < 3 ARCMIN
- 4. RoHS: COMPLIANT

FOR INFORMATION ONLY:  
DO NOT MANUFACTURE  
PARTS TO THIS DRAWING



SPECIFICATIONS SUBJECT TO CHANGE WITHOUT NOTICE  
DIMENSIONS ARE FOR REFERENCE ONLY

	S1	S2
SHAPE	CONVEX	PLANO
SURFACE QUALITY	20-10	20-10
CLEAR APERTURE	$\varnothing 22.86$	$\varnothing 22.86$
BEVEL	PROTECTIVE AS NEEDED	PROTECTIVE AS NEEDED

EFL: 300.35mm		 Edmund Optics®	
BFL: 299.25mm			
		TITLE	25.4mm Diameter x 300mm FL, 370-550nm Coated, Ultrafast Thin PCX Lens
ALL DIMS IN	mm	DWG NO	11681
			SHEET 1 OF 1