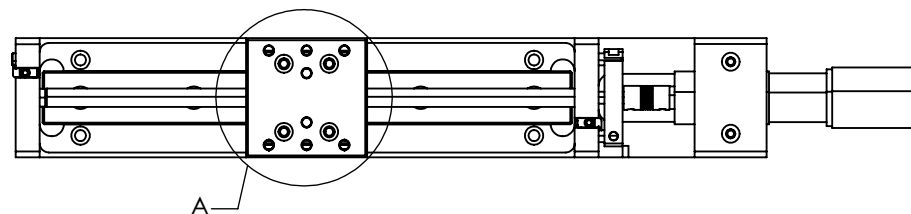
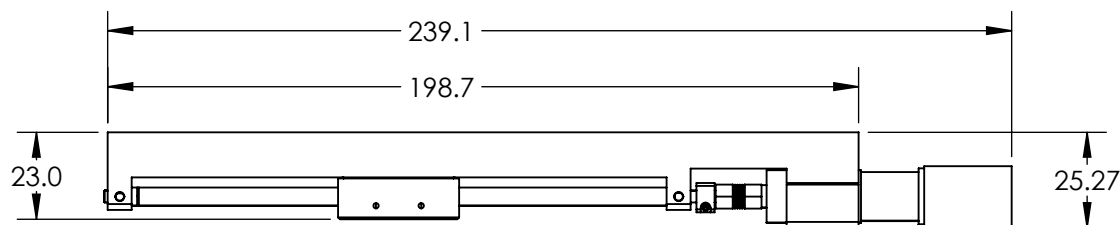
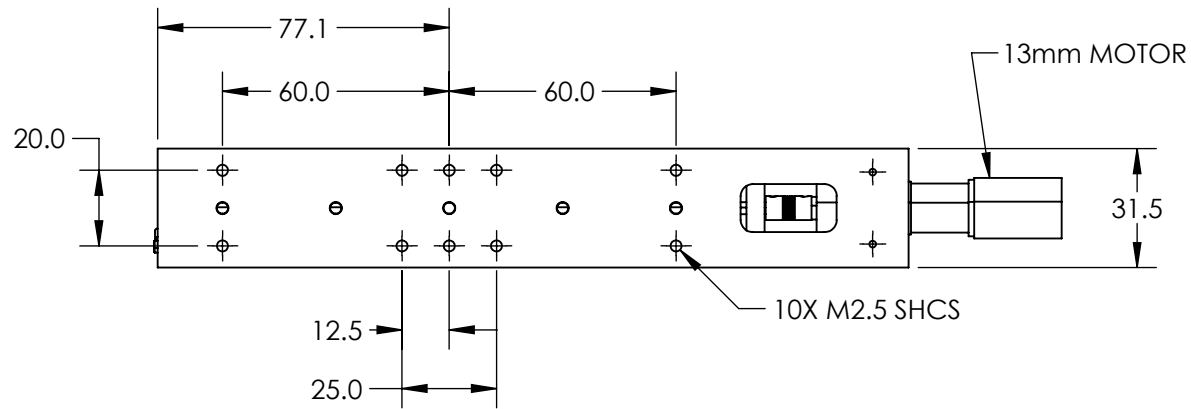
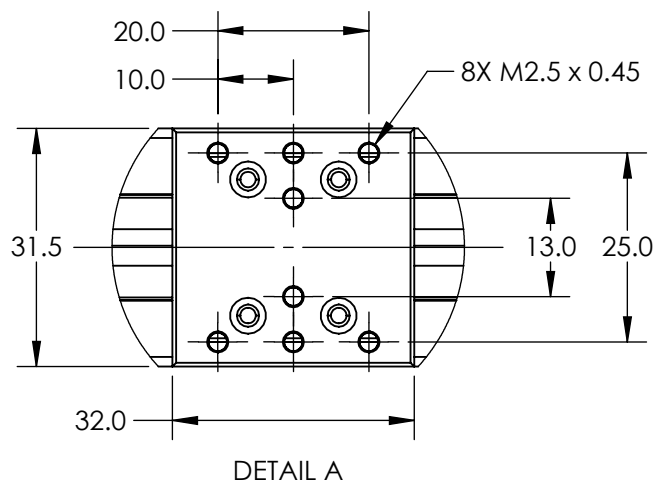


NOTES:

1. TYPE OF MOVEMENT: Single Axis  
TRAVEL (mm) : 108  
ACCURACY (um):  $\pm 1.0$  per 25mm of travel
2. TYPE OF DRIVE: Precision Leadscrew
3. RESOLUTION (um): 0.3595
4. MAXIMUM RUNOUT (mm): 0.003 per Inch
5. STRAIGHTNESS / FLATNESS (um):  $\pm 2.0$
6. PITCH: 80 TPI
7. REPEATABILITY (um):  $\pm 0.5$
8. BACKLASH (um): 1
9. GEAR DRIVE RATIO: 14:1  
SPEED (mm/s): 7
10. VACUUM COMPATIBILITY: 10-3 Torr



**FOR INFORMATION ONLY:  
DO NOT MANUFACTURE  
PARTS TO THIS DRAWING**

SPECIFICATIONS SUBJECT TO  
CHANGE WITHOUT NOTICE  
DIMENSIONS ARE FOR  
REFERENCE ONLY

**Edmund Optics®**

THIRD ANGLE PROJECTION		TITLE		108mm Travel, Heavy Load Stage, Extended Type	
ALL DIMS IN	mm	DWG NO	55331	SHEET 1 OF 1	