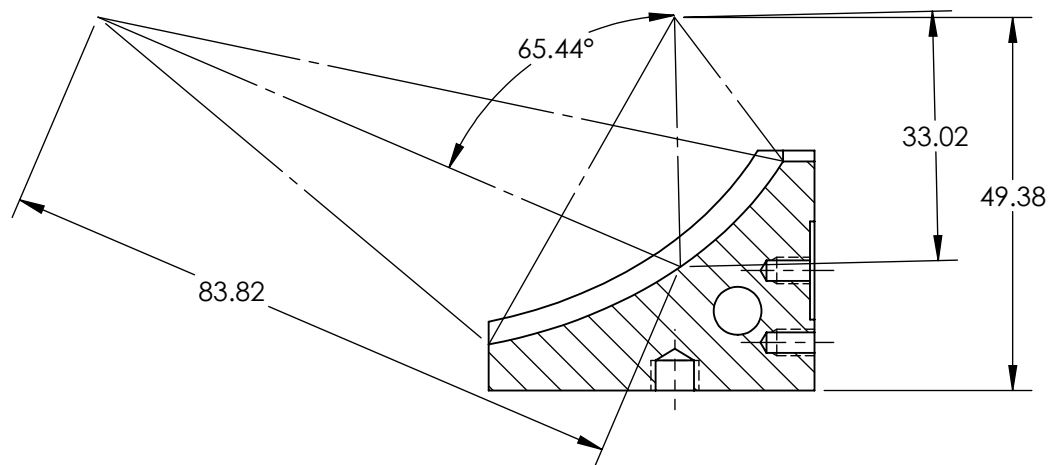
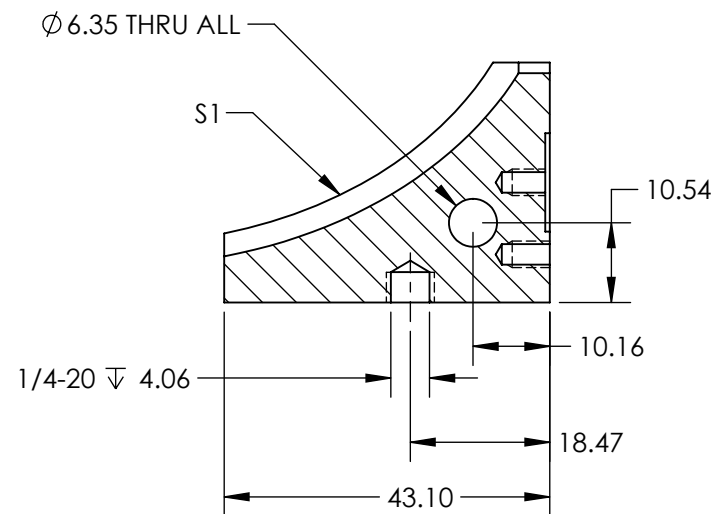
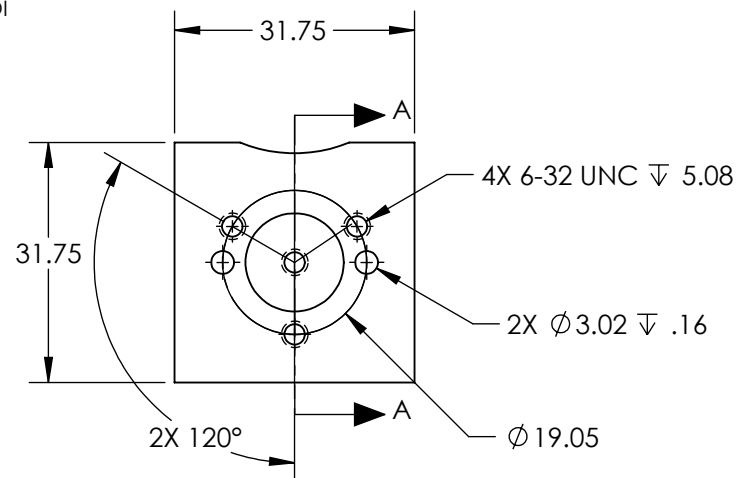


NOTES:

1. SUBSTRATE MATERIAL: ALUMINUM
2. FINISH (EXCEPT SURFACES S1):
BLACK ANODIZED
3. COATING (APPLY ACROSS CLEAR APERTURE)
S1: PROTECTED GOLD
R(AVG) > 96% @ 700 - 2000nm @ 0° AOI
Ravg > 96% @ 2000 - 10,000nm @ 0° AOI
4. RoHS: COMPLIANT

FOR INFORMATION ONLY:
DO NOT MANUFACTURE
PARTS TO THIS DRAWING

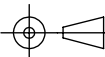


SECTION A-A

SPECIFICATIONS SUBJECT TO CHANGE WITHOUT NOTICE
DIMENSIONS ARE FOR REFERENCE ONLY

	S1	S2
SHAPE	CONCAVE	PLANO
SURFACE ROUGHNESS (Å)	< 100	< 100
SURFACE QUALITY	60-40	60-40
MIN CLEAR APERTURE (%)	90	80
BEVEL MAX FACE	PROTECTIVE AS NEEDED	PROTECTIVE AS NEEDED

THIRD ANGLE
PROJECTION



ALL DIMS IN

mm

EO® **Edmund Optics**®

TITLE

31.75mm Sq., 2.5X, Protected Gold Off-Axis
Ellipsoidal Mirror

DWG NO

12498

SHEET
1 OF 1